

MAX



2015 

ADULT FULL FACE

03-21

FX-120, FX-95, FX-90 AND FX-MAGNUS (3XL & 4XL)



FX-120



FX-95



FX-90



FX-MAGNUS

ADULT FULL FACE - MODULAR

22-23

FX-140



FX-140



ADULT DUAL SPORTS

24-33

FX-41DS AND FX-39DS



FX-41DS



FX-39DS

ADULT & YOUTH OFF-ROAD/ATV

34-55

FX-21, FX-17, FX17 YOUTH AND FX-19



FX-21



FX-17/17Y



FX-19

ADULT & YOUTH OPEN FACE

56-71

FX-55, FX-50, FX-43, FX-42A, FX-75/75 YOUTH, FX-76 AND SHIELDS (PAGE 79-83)



FX-55



FX-50



FX-43



FX-42A



FX-76



FX-75/75Y



**3-SNAP FLIP SHIELD, FLAT SHIELD AND HELMET SHIELD
PAGE 79-83**

ADULT HALF HELMET

72-78

FX-200, FX-200 SLICK, FX-72, FX-70, FX-88



FX-200



FX-200 SLICK



FX-72



FX-70



FX-88

ADULT SNOW HELMET

84-90

FX-39DS, FX-90, FX-MAGNUS (3XL & 4XL), D/L AND D/L ELECTRIC SHIELD



**FX-39DS
SNOW**



**FX-90
SNOW**



**FX-MAGNUS
SNOW**



**D/L ELECTRIC
SHIELD**



**BREATH
GUARD**

FX-120 SOLID & MULTI AIR PUMP

ADULT FULL-FACE

SAFETY CERTIFICATIONS

This helmet model meets or exceeds both ECE 22.05 and DOT FMVSS-218 motorcycle helmet safety standards.

HELMET WEIGHT

A large FX-120 weighs 1.59 kg or 3.50 lbs.

SPECIFICATIONS & FEATURES

- An aerodynamic shell design constructed using advanced fiberglass reinforced plastic (FRP) for light weight and strength.
- Air bladder final fit comfort system
- A helmet liner and cheek pads made with a hypo-allergenic and anti-microbial nylon, all of which are washable
- Removable and snap in cheekpad system
- Smoke flip down inner sun shield
- Retention system is quick release with sewn on ECE logo
- A clear coat finish to protect paint & graphics
- Comes with a Limited One Year Warranty

NOTE: SEE PAGE 89 FOR THE COLD WEATHER SNOW SHIELD



GLOSS BLACK SOLID



WINE RED SOLID



FLAT BLACK SOLID



SILVER SOLID



PEARL WHITE SOLID



HI-VIS YELLOW SOLID



AFX DOT/ECE Cam buckle quick release



PRESSURE RELEASE VALVE AIR PRESSURE PUMP



Smoke tinted one touch inner flip down sun shield system



WINE RED SOLID

GLOSS BLACK SOLID

FLAT BLACK SOLID

SILVER SOLID

PEARL WHITE SOLID

SAFETY ORANGE SOLID

HI-VIS YELLOW SOLID

SAFETY ORANGE SOLID

PART NUMBERS	XS	0101-6396
	S	0101-6397
	M	0101-6398
	L	0101-6399
	XL	0101-6400
	XXL	0101-6401

PART NUMBERS	XS	0101-6402
	S	0101-6403
	M	0101-6404
	L	0101-6405
	XL	0101-6406
	XXL	0101-6407

PART NUMBERS	XS	0101-6408
	S	0101-6409
	M	0101-6410
	L	0101-6411
	XL	0101-6412
	XXL	0101-6413

PART NUMBERS	XS	0101-6414
	S	0101-6415
	M	0101-6416
	L	0101-6417
	XL	0101-6418
	XXL	0101-6419

PART NUMBERS	XS	0101-6420
	S	0101-6421
	M	0101-6422
	L	0101-6423
	XL	0101-6424
	XXL	0101-6425

PART NUMBERS	XS	0101-6426
	S	0101-6427
	M	0101-6428
	L	0101-6429
	XL	0101-6430
	XXL	0101-6431

PART NUMBERS	XS	0101-6432
	S	0101-6433
	M	0101-6434
	L	0101-6435
	XL	0101-6436
	XXL	0101-6437



**SAFETY ORANGE
MULTI**



**BLUE
MULTI**



**SILVER
MULTI**



**RED
MULTI**



**PEARL WHITE
MULTI**



**FUCHSIA
MULTI**



**GREEN
MULTI**

**BLUE
MULTI**

XS	N/A
S	0101-6438
M	0101-6439
L	0101-6440
XL	0101-6441
XXL	0101-6442

**RED
MULTI**

XS	N/A
S	0101-6443
M	0101-6444
L	0101-6445
XL	0101-6446
XXL	0101-6447

**SILVER
MULTI**

XS	N/A
S	0101-6448
M	0101-6449
L	0101-6450
XL	0101-6451
XXL	0101-6452

**PEARL WHITE
MULTI**

XS	N/A
S	0101-6453
M	0101-6454
L	0101-6455
XL	0101-6456
XXL	0101-6457

**FUCHSIA
MULTI**

XS	0101-6458
S	0101-6459
M	0101-6460
L	0101-6461
XL	0101-6462
XXL	N/A

**GREEN
MULTI**

XS	N/A
S	0101-6463
M	0101-6464
L	0101-6465
XL	0101-6466
XXL	0101-6467

**SAFETY ORANGE
MULTI**

XS	N/A
S	0101-6468
M	0101-6469
L	0101-6470
XL	0101-6471
XXL	0101-6472

PART NUMBERS

FX-95 MEGA

ADULT FULL-FACE

SAFETY CERTIFICATIONS

This helmet model meets or exceeds both ECE 22.05 and DOT FMVSS-218 motorcycle helmet safety standards.

HELMET WEIGHT

A large-size FX-95 weighs 1.59 kg or 3.5 lbs.

SPECIFICATIONS & FEATURES

- An aerodynamic shell design constructed using an advanced lightweight composite poly-alloy
- A helmet liner and cheek pads made with a hypo-allergenic and anti-microbial nylon, all of which are removable and washable
- A flush-fit lock down, side-coverless face shield that is optically correct, compound-curved, scratch-resistant and protects against UV-rays
- There are several tinted shields available for this model
- 8 points of ventilation with chin, side, forehead, top and rear vents
- Retention system is quick release with sewn on ECE logo
- Provides ample ear cavity space for speakers
- A clear coat finish to protect paint & graphics
- Comes with a Limited One Year Warranty

NOTE: SEE PAGE 89 FOR THE COLD WEATHER SNOW SHIELD



**BRONZE ORANGE
MULTI**



**AFX DOT/ECE Cam
buckle quick release**



LINER



**BLUE
MULTI**



**RED
MULTI**



**BLACK
MULTI**



**FUCHSIA
MULTI**



**GREEN
MULTI**



**YELLOW GOLD
MULTI**

**BLUE
MULTI**

PART NUMBERS	
XS	N/A
S	0101-6346
M	0101-6347
L	0101-6348
XL	0101-6349
XXL	0101-6350

**RED
MULTI**

XS	N/A
S	0101-6351
M	0101-6352
L	0101-6353
XL	0101-6354
XXL	0101-6355

**BLACK
MULTI**

XS	N/A
S	0101-6356
M	0101-6357
L	0101-6358
XL	0101-6359
XXL	0101-6360

**FUCHSIA
MULTI**

XS	0101-6361
S	0101-6362
M	0101-6363
L	0101-6364
XL	0101-6365
XXL	N/A

**GREEN
MULTI**

XS	N/A
S	0101-6366
M	0101-6367
L	0101-6368
XL	0101-6369
XXL	0101-6370

**YELLOW GOLD
MULTI**

XS	N/A
S	0101-6371
M	0101-6372
L	0101-6373
XL	0101-6374
XXL	0101-6375

**BRONZE ORANGE
MULTI**

XS	N/A
S	0101-6376
M	0101-6377
L	0101-6378
XL	0101-6379
XXL	0101-6380

FX-95 DRAGON FLY

ADULT FULL-FACE

SAFETY CERTIFICATIONS

This helmet model meets or exceeds both ECE 22.05 and DOT FMVSS-218 motorcycle helmet safety standards.

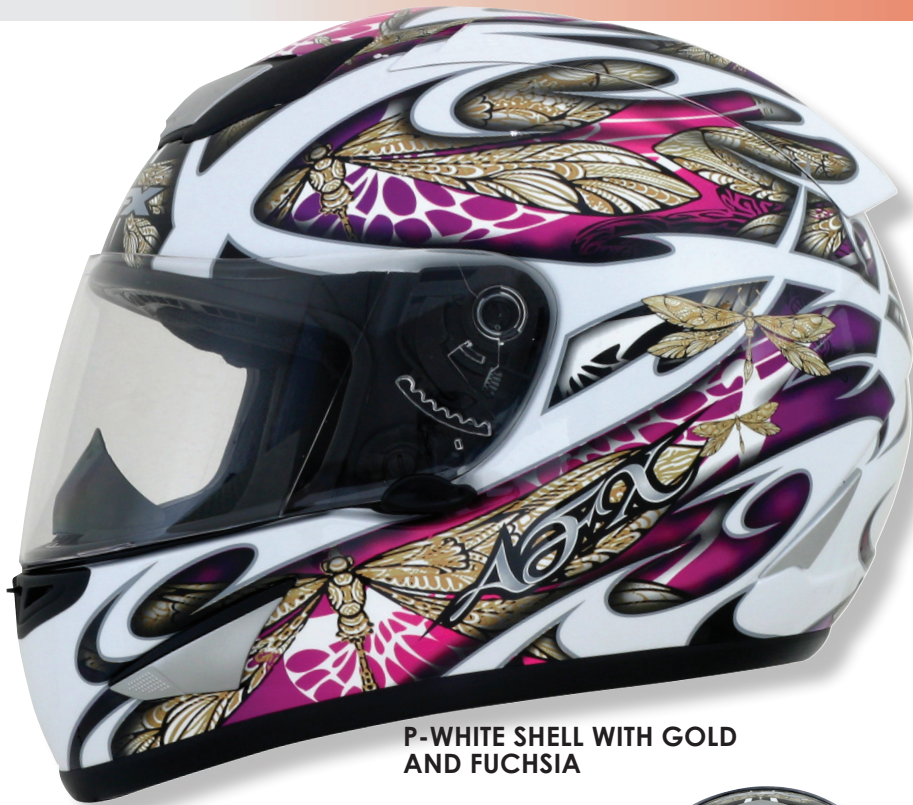
HELMET WEIGHT

A large-size FX-95 weighs 1.59 kg or 3.5 lbs.

SPECIFICATIONS & FEATURES

- An aerodynamic shell design constructed using an advanced lightweight composite poly-alloy
- A helmet liner and cheek pads made with a hypo-allergenic and anti-microbial nylon, all of which are removable and washable
- A flush-fit lock down, side-coverless face shield that is optically correct, compound-curved, scratch-resistant and protects against UV-rays
- There are several tinted shields available for this model
- 8 points of ventilation with chin, side, forehead, top and rear vents
- Retention system is quick release with sewn on ECE logo
- Provides ample ear cavity space for speakers
- A clear coat finish to protect paint & graphics
- Comes with a Limited One Year Warranty

NOTE: SEE PAGE 89 FOR THE COLD WEATHER SNOW SHIELD



P-WHITE SHELL WITH GOLD AND FUCHSIA



P-WHITE SHELL WITH GOLD AND SILVER



BLACK SHELL WITH GOLD AND SILVER

P-WHITE SHELL WITH GOLD AND FUCHSIA

P-WHITE SHELL WITH GOLD AND SILVER

BLACK SHELL WITH GOLD AND SILVER

XS	0101-6381
S	0101-6382
M	0101-6383
L	0101-6384
XL	0101-6385
XXL	N/A

XS	0101-6386
S	0101-6387
M	0101-6388
L	0101-6389
XL	0101-6390
XXL	N/A

XS	0101-6391
S	0101-6392
M	0101-6393
L	0101-6394
XL	0101-6395
XXL	N/A



LINER



AFX DOT/ECE Cam buckle quick release

PART NUMBERS

FX-95 STUNT

ADULT FULL-FACE

SAFETY CERTIFICATIONS

This helmet model meets or exceeds both ECE 22.05 and DOT FMVSS-218 motorcycle helmet safety standards.

HELMET WEIGHT

A large-size FX-95 weighs 1.59 kg or 3.5 lbs.

SPECIFICATIONS & FEATURES

- An aerodynamic shell design constructed using an advanced lightweight composite poly-alloy
- A helmet liner and cheek pads made with a hypo-allergenic and anti-microbial nylon, all of which are removable and washable
- A flush-fit lock down, side-coverless face shield that is optically correct, compound-curved, scratch-resistant and protects against UV-rays
- There are several tinted shields available for this model
- 8 points of ventilation with chin, side, forehead, top and rear vents
- Retention system is quick release with sewn on ECE logo
- Provides ample ear cavity space for speakers
- A clear coat finish to protect paint & graphics
- Comes with a Limited One Year Warranty

NOTE: SEE PAGE 89 FOR THE COLD WEATHER SNOW SHIELD



ORANGE STUNT ON BLACK



AFX DOT/ECE Cam buckle quick release



E-GREEN STUNT ON BLACK



E-BLUE STUNT ON SILVER

E-GREEN STUNT ON BLACK

PART NUMBERS	XS	0101-5812
	S	0101-5813
	M	0101-5814
	L	0101-5815
	XL	0101-5816
	XXL	0101-5817

E-BLUE STUNT ON SILVER

PART NUMBERS	XS	0101-5818
	S	0101-5819
	M	0101-5820
	L	0101-5821
	XL	0101-5822
	XXL	0101-5823

ORANGE STUNT ON BLACK

PART NUMBERS	XS	0101-5824
	S	0101-5825
	M	0101-5826
	L	0101-5827
	XL	0101-5828
	XXL	0101-5829

FX-95 SOLID

ADULT FULL-FACE



SILVER
SOLID

SAFETY CERTIFICATIONS

This helmet model meets or exceeds both ECE 22.05 and DOT FMVSS-218 motorcycle helmet safety standards.

HELMET WEIGHT

A large-size FX-95 weighs 1.59 kg or 3.5 lbs.

SPECIFICATIONS & FEATURES

- An aerodynamic shell design constructed using an advanced lightweight composite poly-alloy
- A helmet liner and cheek pads made with a hypo-allergenic and anti-microbial nylon, all of which are removable and washable
- A flush-fit lock down, side-coverless face shield that is optically correct, compound-curved, scratch-resistant and protects against UV-rays
- There are several tinted shields available for this model
- 8 points of ventilation with chin, side, forehead, top and rear vents
- Retention system is quick release with sewn on ECE logo
- Provides ample ear cavity space for speakers
- A clear coat finish to protect paint & graphics
- Comes with a Limited One Year Warranty

NOTE: SEE PAGE 89 FOR THE COLD WEATHER SNOW SHIELD



FLAT BLACK
SOLID



BLACK
SOLID



AFX DOT/ECE Cam
buckle quick release



BLACK
SOLID



PEARL WHITE
SOLID



HI-VIS
YELLOW

PART NUMBERS

XS 0101-5056
S 0101-5057
M 0101-5058
L 0101-5059
XL 0101-5060
XXL 0101-5061

FLAT BLACK
SOLID

XS 0101-5062
S 0101-5063
M 0101-5064
L 0101-5065
XL 0101-5066
XXL 0101-5067

PEARL WHITE
SOLID

XS 0101-5074
S 0101-5075
M 0101-5076
L 0101-5077
XL 0101-5078
XXL 0101-5079

SILVER
SOLID

XS 0101-5068
S 0101-5069
M 0101-5070
L 0101-5071
XL 0101-5072
XXL 0101-5073

HI-VIS
YELLOW

XS 0101-5218
S 0101-5219
M 0101-5220
L 0101-5221
XL 0101-5222
XXL 0101-5223

FX-90 SOLID & METAL FLAKE

ADULT FULL-FACE

SAFETY CERTIFICATIONS

This helmet model meets or exceeds both ECE 22.05 and DOT FMVSS-218 motorcycle helmet safety standards.

HELMET WEIGHT

A large-size FX-90 weighs 1.36 kg or 3.00 lbs.

SPECIFICATIONS & FEATURES

- An aerodynamic shell design constructed using an advanced lightweight composite poly-alloy
- A helmet liner and cheek pads made with a hypo-allergenic and anti-microbial nylon, all of which are removable and washable
- Provides ample ear cavity space for speakers
- A flush-fit, side-coverless face shield that is optically correct, compound-curved, scratch-resistant and protects against UV-rays
- There are optional tinted shields available for this model
- 7 points of ventilation with chin, side, rear & forehead vents
- A square type D-ring with chin strap holder
- A clear coat finish to protect paint & graphics
- Comes with a Limited One Year Warranty
- Use same outer shields as the FX-100 street helmet

NOTE: SEE PAGE 89 FOR THE COLD WEATHER SNOW SHIELD

NOTE: SEE PAGE 90 FOR THE COLD WEATHER SNOW BREATH GUARD & CHIN CURTAIN



SILVER SOLID



BLACK SOLID



WINE RED SOLID



HI-VIS YELLOW SOLID



BLUE SOLID



SAFETY ORANGE SOLID



FLAT BLACK SOLID



PEARL WHITE SOLID



RED SOLID

	BLACK SOLID	FLAT BLACK SOLID	SILVER SOLID	PEARL WHITE SOLID	WINE RED SOLID	RED SOLID	BLUE SOLID	HI-VIS YELLOW SOLID	SAFETY ORANGE SOLID
PART NUMBERS	XS 0101-3337	XS 0101-3343	XS 0101-3997	XS 0101-4003	XS 0101-4009	XS 0101-4015	XS 0101-4021	XS 0101-5742	XS 0101-5748
	S 0101-3338	S 0101-3344	S 0101-3998	S 0101-4004	S 0101-4010	S 0101-4016	S 0101-4022	S 0101-5743	S 0101-5749
	M 0101-3339	M 0101-3345	M 0101-3999	M 0101-4005	M 0101-4011	M 0101-4017	M 0101-4023	M 0101-5744	M 0101-5750
	L 0101-3340	L 0101-3346	L 0101-4000	L 0101-4006	L 0101-4012	L 0101-4018	L 0101-4024	L 0101-5745	L 0101-5751
	XL 0101-3341	XL 0101-3347	XL 0101-4001	XL 0101-4007	XL 0101-4013	XL 0101-4019	XL 0101-4025	XL 0101-5746	XL 0101-5752
	XXL 0101-3342	XXL 0101-3348	XXL 0101-4002	XXL 0101-4008	XXL 0101-4014	XXL 0101-4020	XXL 0101-4026	XXL 0101-5747	XXL 0101-5753



FUCHSIA
SOLID



FROST GRAY
SOLID



SILVER METAL FLAKE
SOLID



DEEP BLUE METAL FLAKE
SOLID



GUN METAL FLAKE
SOLID



BLACK METAL FLAKE
SOLID



GOLD METAL FLAKE
SOLID

FUCHSIA
SOLID

XS	0101-6922
S	0101-6923
M	0101-6924
L	0101-6925
XL	0101-6926
XXL	N/A

FROST GRAY
SOLID

XS	0101-6927
S	0101-6928
M	0101-6929
L	0101-6930
XL	0101-6931
XXL	0101-6932

BLACK
METAL FLAKE

XS	0101-6933
S	0101-6934
M	0101-6935
L	0101-6936
XL	0101-6937
XXL	0101-6938

SILVER
METAL FLAKE

XS	0101-6939
S	0101-6940
M	0101-6941
L	0101-6942
XL	0101-6943
XXL	0101-6944

GUN
METAL FLAKE

XS	0101-6945
S	0101-6946
M	0101-6947
L	0101-6948
XL	0101-6949
XXL	0101-6950

DEEP BLUE
METAL FLAKE

XS	0101-6951
S	0101-6952
M	0101-6953
L	0101-6954
XL	0101-6955
XXL	0101-6956

GOLD
METAL FLAKE

XS	0101-6957
S	0101-6958
M	0101-6959
L	0101-6960
XL	0101-6961
XXL	0101-6962

FX-90 REAPER

ADULT FULL-FACE

SAFETY CERTIFICATIONS

This helmet model meets or exceeds both ECE 22.05 and DOT FMVSS-218 motorcycle helmet safety standards.

HELMET WEIGHT

A large-size FX-90 weighs 1.36 kg or 3.00 lbs.

SPECIFICATIONS & FEATURES

- An aerodynamic shell design constructed using an advanced lightweight composite poly-alloy
- A helmet liner and cheek pads made with a hypo-allergenic and anti-microbial nylon, all of which are removable and washable
- Provides ample ear cavity space for speakers
- A flush-fit, side-coverless face shield that is optically correct, compound-curved, scratch-resistant and protects against UV-rays
- There are optional tinted shields available for this model
- 7 points of ventilation with chin, side, rear & forehead vents
- A square type D-ring with chin strap holder
- A clear coat finish to protect paint & graphics
- Comes with a Limited One Year Warranty
- Use same outer shields as the FX-100 street helmet

NOTE: SEE PAGE 89 FOR THE COLD WEATHER SNOW SHIELD

NOTE: SEE PAGE 90 FOR THE COLD WEATHER SNOW BREATH GUARD & CHIN CURTAIN



SAFETY ORANGE MULTI



FLAT BLACK MULTI



RED MULTI

FLAT BLACK MULTI

PART NUMBERS	
XS	0101-6816
S	0101-6817
M	0101-6818
L	0101-6819
XL	0101-6820
XXL	0101-6821

FROST GRAY MULTI

XS	0101-6822
S	0101-6823
M	0101-6824
L	0101-6825
XL	0101-6826
XXL	0101-6827

GLOSS BLACK MULTI

XS	0101-6828
S	0101-6829
M	0101-6830
L	0101-6831
XL	0101-6832
XXL	0101-6833

FUCHSIA MULTI

XS	0101-6834
S	0101-6835
M	0101-6836
L	0101-6837
XL	0101-6838
XXL	N/A

SILVER MULTI

XS	0101-6839
S	0101-6840
M	0101-6841
L	0101-6842
XL	0101-6843
XXL	0101-6844

BLUE MULTI

XS	0101-6845
S	0101-6846
M	0101-6847
L	0101-6848
XL	0101-6849
XXL	0101-6850

RED MULTI

XS	0101-6851
S	0101-6852
M	0101-6853
L	0101-6854
XL	0101-6855
XXL	0101-6856



**BLUE
MULTI**



**FUCHSIA
MULTI**



**GREEN
MULTI**



**SILVER
MULTI**



**GLOSS
BLACK MULTI**



**HI-VIS YELLOW
MULTI**



**PEARL WHITE
MULTI**



**FROST GRAY
MULTI**

**PEARL WHITE
MULTI**

XS	0101-6857
S	0101-6858
M	0101-6859
L	0101-6860
XL	0101-6861
XXL	0101-6862

**GREEN
MULTI**

XS	0101-6863
S	0101-6864
M	0101-6865
L	0101-6866
XL	0101-6867
XXL	0101-6868

**HI-VIS YELLOW
MULTI**

XS	0101-6869
S	0101-6870
M	0101-6871
L	0101-6872
XL	0101-6873
XXL	0101-6874

**SAFETY ORANGE
MULTI**

XS	0101-6875
S	0101-6876
M	0101-6877
L	0101-6878
XL	0101-6879
XXL	0101-6880

PART NUMBERS

FX-90 DANGER

ADULT FULL-FACE

SAFETY CERTIFICATIONS

This helmet model meets or exceeds both ECE 22.05 and DOT FMVSS-218 motorcycle helmet safety standards.

HELMET WEIGHT

A large-size FX-90 weighs 1.36 kg or 3.00 lbs.

SPECIFICATIONS & FEATURES

- An aerodynamic shell design constructed using an advanced lightweight composite poly-alloy
- A helmet liner and cheek pads made with a hypo-allergenic and anti-microbial nylon, all of which are removable and washable
- Provides ample ear cavity space for speakers
- A flush-fit, side-coverless face shield that is optically correct, compound-curved, scratch-resistant and protects against UV-rays
- There are optional tinted shields available for this model
- 7 points of ventilation with chin, side, rear & forehead vents
- A square type D-ring with chin strap holder
- A clear coat finish to protect paint & graphics
- Comes with a Limited One Year Warranty
- Use same outer shields as the FX-100 street helmet

NOTE: SEE PAGE 89 FOR THE COLD WEATHER SNOW SHIELD

NOTE: SEE PAGE 90 FOR THE COLD WEATHER SNOW BREATH GUARD & CHIN CURTAIN



ORANGE
MULTI



FUCHSIA MULTI

PART NUMBERS	
XS	0101-6881
S	0101-6882
M	0101-6883
L	0101-6884
XL	0101-6885
XXL	N/A

SILVER MULTI

XS	0101-6886
S	0101-6887
M	0101-6888
L	0101-6889
XL	0101-6890
XXL	0101-6891

BLUE MULTI

XS	0101-6892
S	0101-6893
M	0101-6894
L	0101-6895
XL	0101-6896
XXL	0101-6897

RED MULTI

XS	0101-6898
S	0101-6899
M	0101-6900
L	0101-6901
XL	0101-6902
XXL	0101-6903

GREEN MULTI

XS	0101-6904
S	0101-6905
M	0101-6906
L	0101-6907
XL	0101-6908
XXL	0101-6909

YELLOW MULTI

XS	0101-6910
S	0101-6911
M	0101-6912
L	0101-6913
XL	0101-6914
XXL	0101-6915

ORANGE MULTI

XS	0101-6916
S	0101-6917
M	0101-6918
L	0101-6919
XL	0101-6920
XXL	0101-6921



**RED
MULTI**



**BLUE
MULTI**



**FUCHSIA
MULTI**



**GREEN
MULTI**



**SILVER
MULTI**



**YELLOW
MULTI**

FX-90 SPECIES

ADULT FULL-FACE

SAFETY CERTIFICATIONS

This helmet model meets or exceeds both ECE 22.05 and DOT FMVSS-218 motorcycle helmet safety standards.

HELMET WEIGHT

A large-size FX-90 weighs 1.36 kg or 3.00 lbs.

SPECIFICATIONS & FEATURES

- An aerodynamic shell design constructed using an advanced lightweight composite poly-alloy
- A helmet liner and cheek pads made with a hypo-allergenic and anti-microbial nylon, all of which are removable and washable
- Provides ample ear cavity space for speakers
- A flush-fit, side-coverless face shield that is optically correct, compound-curved, scratch-resistant and protects against UV-rays
- There are optional tinted shields available for this model
- 7 points of ventilation with chin, side, rear & forehead vents
- A square type D-ring with chin strap holder
- A clear coat finish to protect paint & graphics
- Comes with a Limited One Year Warranty
- Use same outer shields as the FX-100 street helmet

NOTE: SEE PAGE 89 FOR THE COLD WEATHER SNOW SHIELD

NOTE: SEE PAGE 90 FOR THE COLD WEATHER SNOW BREATH GUARD & CHIN CURTAIN



SAFETY ORANGE MULTI



BLUE MULTI



SILVER MULTI



LINER



RED MULTI



PEARL WHITE MULTI



BLACK MULTI



HI-VIS YELLOW MULTI

BLUE MULTI

RED MULTI

BLACK MULTI

SILVER MULTI

PEARL WHITE MULTI

HI-VIS YELLOW MULTI

SAFETY ORANGE MULTI

PART NUMBERS	XS	0101-6304
	S	0101-6305
	M	0101-6306
	L	0101-6307
	XL	0101-6308
	XXL	0101-6309

XS	0101-6310
S	0101-6311
M	0101-6312
L	0101-6313
XL	0101-6314
XXL	0101-6315

XS	0101-6316
S	0101-6317
M	0101-6318
L	0101-6319
XL	0101-6320
XXL	0101-6321

XS	0101-6322
S	0101-6323
M	0101-6324
L	0101-6325
XL	0101-6326
XXL	0101-6327

XS	0101-6328
S	0101-6329
M	0101-6330
L	0101-6331
XL	0101-6332
XXL	0101-6333

XS	0101-6334
S	0101-6335
M	0101-6336
L	0101-6337
XL	0101-6338
XXL	0101-6339

XS	0101-6340
S	0101-6341
M	0101-6342
L	0101-6343
XL	0101-6344
XXL	0101-6345

FX-90 PASSION

ADULT FULL-FACE



SILVER PASSION ON GLOSS BLACK

SAFETY CERTIFICATIONS

This helmet model meets or exceeds both ECE 22.05 and DOT FMVSS-218 motorcycle helmet safety standards.

HELMET WEIGHT

A large-size FX-90 weighs 1.36 kg or 3.00 lbs.

SPECIFICATIONS & FEATURES

- An aerodynamic shell design constructed using an advanced lightweight composite poly-alloy
- A helmet liner and cheek pads made with a hypo-allergenic and anti-microbial nylon, all of which are removable and washable
- Provides ample ear cavity space for speakers
- A flush-fit, side-coverless face shield that is optically correct, compound-curved, scratch-resistant and protects against UV-rays
- There are optional tinted shields available for this model
- 7 points of ventilation with chin, side, rear & forehead vents
- A square type D-ring with chin strap holder
- A clear coat finish to protect paint & graphics
- Comes with a Limited One Year Warranty
- Use same outer shields as the FX-100 street helmet

NOTE: SEE PAGE 89 FOR THE COLD WEATHER SNOW SHIELD

NOTE: SEE PAGE 90 FOR THE COLD WEATHER SNOW BREATH GUARD & CHIN CURTAIN



PINK PASSION ON GLOSS BLACK



LINER



PINK PASSION ON PEARL WHITE



PINK PASSION ON SILVER



SILVER PASSION ON PINK

PINK PASSION ON GLOSS BLACK

SILVER PASSION ON GLOSS BLACK

PINK PASSION ON PEARL WHITE

PINK PASSION ON SILVER

SILVER PASSION ON PINK

XS	0101-5176
S	0101-5177
M	0101-5178
L	0101-5179
XL	0101-5180
XXL	0101-5181

XS	0101-5182
S	0101-5183
M	0101-5184
L	0101-5185
XL	0101-5186
XXL	0101-5187

XS	0101-5832
S	0101-5833
M	0101-5834
L	0101-5835
XL	0101-5836
XXL	N/A

XS	0101-5837
S	0101-5838
M	0101-5839
L	0101-5840
XL	0101-5841
XXL	N/A

XS	0101-5842
S	0101-5843
M	0101-5844
L	0101-5845
XL	0101-5846
XXL	N/A

PART NUMBERS

FX-90 DARE

ADULT FULL-FACE

SAFETY CERTIFICATIONS

This helmet model meets or exceeds both ECE 22.05 and DOT FMVSS-218 motorcycle helmet safety standards.

HELMET WEIGHT

A large-size FX-90 weighs 1.36 kg or 3.00 lbs.

SPECIFICATIONS & FEATURES

- An aerodynamic shell design constructed using an advanced lightweight composite poly-alloy
- A helmet liner and cheek pads made with a hypo-allergenic and anti-microbial nylon, all of which are removable and washable
- Provides ample ear cavity space for speakers
- A flush-fit, side-coverless face shield that is optically correct, compound-curved, scratch-resistant and protects against UV-rays
- There are optional tinted shields available for this model
- 7 points of ventilation with chin, side, rear & forehead vents
- A square type D-ring with chin strap holder
- A clear coat finish to protect paint & graphics
- Comes with a Limited One Year Warranty
- Use same outer shields as the FX-100 street helmet

NOTE: SEE PAGE 89 FOR THE COLD WEATHER SNOW SHIELD

NOTE: SEE PAGE 90 FOR THE COLD WEATHER SNOW BREATH GUARD & CHIN CURTAIN



DARE MULTI ON RED



LINER



DARE MULTI ON FLAT BLACK



DARE MULTI ON BLUE



DARE MULTI ON GLOSS BLACK



DARE MULTI ON SILVER

DARE MULTI ON RED

XS	0101-5754
S	0101-5755
M	0101-5756
L	0101-5757
XL	0101-5758
XXL	0101-5759

DARE MULTI ON FLAT BLACK

XS	0101-5760
S	0101-5761
M	0101-5762
L	0101-5763
XL	0101-5764
XXL	0101-5765

DARE MULTI ON BLUE

XS	0101-5766
S	0101-5767
M	0101-5768
L	0101-5769
XL	0101-5770
XXL	0101-5771

DARE MULTI ON GLOSS BLACK

XS	0101-5772
S	0101-5773
M	0101-5774
L	0101-5775
XL	0101-5776
XXL	0101-5777

DARE MULTI ON SILVER

XS	0101-5778
S	0101-5779
M	0101-5780
L	0101-5781
XL	0101-5782
XXL	0101-5783

DARE MULTI ON PINK

XS	0101-5784
S	0101-5785
M	0101-5786
L	0101-5787
XL	0101-5788
XXL	0101-5789

DARE MULTI ON GREEN

XS	0101-5790
S	0101-5791
M	0101-5792
L	0101-5793
XL	0101-5794
XXL	0101-5795

PART NUMBERS



DARE MULTI ON PINK



DARE MULTI ON GREEN



DARE MULTI ON YELLOW



DARE MULTI ON SAFETY ORANGE



DARE MULTI ON YELLOW

DARE MULTI ON SAFETY ORANGE

PART NUMBERS

XS	0101-5796
S	0101-5797
M	0101-5798
L	0101-5799
XL	0101-5800
XXL	0101-5801

XS	0101-5802
S	0101-5803
M	0101-5804
L	0101-5805
XL	0101-5806
XXL	0101-5807

FX-90 FREEDOM & REBEL

ADULT FULL-FACE

SAFETY CERTIFICATIONS

This helmet model meets or exceeds both ECE 22.05 and DOT FMVSS-218 motorcycle helmet safety standards.

HELMET WEIGHT

A large-size FX-90 weighs 1.36 kg or 3.00 lbs.

SPECIFICATIONS & FEATURES

- An aerodynamic shell design constructed using an advanced lightweight composite poly-alloy
- A helmet liner and cheek pads made with a hypo-allergenic and anti-microbial nylon, all of which are removable and washable
- Provides ample ear cavity space for speakers
- A flush-fit, side-coverless face shield that is optically correct, compound-curved, scratch-resistant and protects against UV-rays
- There are optional tinted shields available for this model
- 7 points of ventilation with chin, side, rear & forehead vents
- A square type D-ring with chin strap holder
- A clear coat finish to protect paint & graphics
- Comes with a Limited One Year Warranty
- Use same outer shields as the FX-100 street helmet

NOTE: SEE PAGE 89 FOR THE COLD WEATHER SNOW SHIELD

NOTE: SEE PAGE 90 FOR THE COLD WEATHER SNOW BREATH GUARD & CHIN CURTAIN



**BLACK
FREEDOM**



LINER



**WHITE
FREEDOM**



**ORANGE
REBEL**



**BLACK
REBEL**

BLACK FREEDOM

PART NUMBERS	XS	0101-3427
	S	0101-3428
	M	0101-3429
	L	0101-3430
	XL	0101-3431
	XXL	0101-3432

WHITE FREEDOM

XS	0101-3433
S	0101-3434
M	0101-3435
L	0101-3436
XL	0101-3437
XXL	0101-3438

BLACK REBEL

XS	0101-3439
S	0101-3440
M	0101-3441
L	0101-3442
XL	0101-3443
XXL	0101-3444

ORANGE REBEL

XS	0101-3445
S	0101-3446
M	0101-3447
L	0101-3448
XL	0101-3449
XXL	0101-3450



FX-MAGNUS 3XL & 4XL

ADULT FULL-FACE



SILVER
SOLID



BLACK
SOLID



FLAT BLACK
SOLID



PEARL WHITE
SOLID

SAFETY CERTIFICATIONS

This helmet model meets or exceeds both ECE 22.05 and DOT FMVSS-218 motorcycle helmet safety standards.

HELMET WEIGHT

A 4XL-size FX-Magnus weighs 1.65kg or 3.60 lbs.

SPECIFICATIONS & FEATURES

- An aerodynamic shell design constructed using fibreglass reinforced plastic (FRP)
- A helmet liner and cheek pads made with a hypo-allergenic and anti-microbial nylon, all of which are removable and washable
- Provides ample ear cavity space for speakers
- A flush-fit, side-coverless face shield that is optically correct, compound-curved, scratch-resistant and protects against UV-rays
- Same outer shields, optional shields and ratchet kits as our FX-90/FX-100 helmet model
- 7 points of ventilation with chin, side, rear & forehead vents
- AFX DOT/ECE-approved cam buckle quick-release chinstrap retention system
- A clear coat finish to protect paint & graphics
- Comes with a Limited One Year Warranty

NOTE: SEE PAGE 89 FOR THE COLD WEATHER SNOW SHIELD

NOTE: SEE PAGE 90 FOR THE COLD WEATHER SNOW BREATH GUARD & CHIN CURTAIN



AFX DOT/ECE Cam
buckle quick release



LINER

PART NUMBERS

BLACK
SOLID

3XL 0101-4087
4XL 0101-4088

SILVER
SOLID

3XL 0101-5808
4XL 0101-5809

PEARL WHITE
SOLID

3XL 0101-5810
4XL 0101-5811

FLAT BLACK
SOLID

3XL 0101-5830
4XL 0101-5831

FX-140 MODULAR

ADULT FULL-FACE

SAFETY CERTIFICATIONS

This helmet model meets or exceeds both ECE 22.05 and DOT FMVSS-218 motorcycle helmet safety standards.

HELMET WEIGHT

A large-size FX-140 weighs 1.65 kg or 3.60 lbs.

SPECIFICATIONS & FEATURES

- Flip down inner smoke shield
- An aerodynamic shell design constructed using an advanced lightweight composite poly-alloy
- A helmet liner and cheek pads made with a hypo-allergenic and anti-microbial nylon, all of which are removable and washable
- Provides ample ear cavity space for speakers
- A flush-fit, face shield that is optically correct, compound-curved, scratch-resistant and protects against UV-rays
- There are optional tinted shields available for this model
- 6 points of ventilation with chin, side, rear & forehead vents
- Retention system is quick release with sewn on ECE logo
- A clear coat finish to protect paint & graphics
- Comes with a Limited One Year Warranty

NOTE: SEE PAGE 89 FOR THE COLD WEATHER SNOW SHIELD



SILVER SOLID



AFX DOT/ECE Cam buckle quick release



LINER



FUCHSIA SOLID

XS	0100-1319
S	0100-1320
M	0100-1321
L	0100-1322
XL	0100-1323
XXL	N/A

FLAT BLACK SOLID

BLACK SOLID

SILVER SOLID

PEARL WHITE SOLID

HI-VIS YELLOW SOLID

SAFETY ORANGE SOLID

WINE RED SOLID

FROST GRAY SOLID

PART NUMBERS	XS	S	M	L	XL	XXL	XS	S	M	L	XL	XXL	XS	S	M	L	XL	XXL	XS	S	M	L	XL	XXL	XS	S	M	L	XL	XXL	XS	S	M	L	XL	XXL												
	0100-0953	0100-0954	0100-0955	0100-0956	0100-0957	0100-0958	0100-0959	0100-0960	0100-0961	0100-0962	0100-0963	0100-0964	0100-0965	0100-0966	0100-0967	0100-0968	0100-0969	0100-0970	0100-0971	0100-0972	0100-0973	0100-0974	0100-0975	0100-0976	0100-0977	0100-0978	0100-0979	0100-0980	0100-0981	0100-0982	0100-0983	0100-0984	0100-0985	0100-0986	0100-0987	0100-0988	0100-0989	0100-0990	0100-0991	0100-0992	0100-0993	0100-0994	0100-1313	0100-1314	0100-1315	0100-1316	0100-1317	0100-1318



PEARL WHITE
SOLID (RIGHT VIEW)



PEARL WHITE
SOLID



FROST GRAY
SOLID



FUCHSIA
SOLID



BLACK
SOLID



FLAT BLACK
SOLID



HI-VIS YELLOW
SOLID



SAFETY ORANGE
SOLID



WINE RED
SOLID

FX-41DS SOLID

ADULT DUAL SPORT

SAFETY CERTIFICATIONS

This helmet model meets or exceeds both ECE 22.05 and DOT FMVSS-218 motorcycle helmet safety standards.

HELMET WEIGHT

A large FX-41DS weighs 1.68 kg or 3.69 lbs.

SPECIFICATIONS & FEATURES

- An aerodynamic shell design constructed using an advanced lightweight composite poly-alloy.
- A flip-up, flush fit, quick release, single turn screw face shield with side covers. The shield itself is optically correct compound curved, scratch-resistant and protects against UV-rays
- Shield can be removed to allow open face riding or for use with most goggles.
- Shield can also be used without the visor with included side cover kit
- Smoke tinted inner flip down sun shield system with left side slide lever.
- A helmet liner and cheek pads made with a hypoallergenic and antimicrobial nylon, all of which are removable and washable.
- 17 points of ventilation with chin, side, forehead top and rear vents
- Retention system is quick release with sewn on ECE logo.
- Provides ample ear cavity space for most speaker systems
- A clear coat finish to protect paint & graphics
- Comes with a Limited One Year Warranty

NOTE: SEE PAGE 90 FOR THE COLD WEATHER SNOW BREATH GUARD & CHIN CURTAIN



PEARL WHITE SOLID



AFX DOT/ECE Cam buckle quick release



Smoke tinted inner flip down sun shield system with left side slide lever



FUCHSIA SOLID

Shield can also be used without the visor with included side cover kit

XS	0110-3906
S	0110-3907
M	0110-3908
L	0110-3909
XL	0110-3910
XXL	N/A

FLAT BLACK SOLID

XS	0110-3736
S	0110-3737
M	0110-3738
L	0110-3739
XL	0110-3740
XXL	0110-3741

GLOSS BLACK SOLID

XS	0110-3742
S	0110-3743
M	0110-3744
L	0110-3745
XL	0110-3746
XXL	0110-3747

PEARL WHITE SOLID

XS	0110-3748
S	0110-3749
M	0110-3750
L	0110-3751
XL	0110-3752
XXL	0110-3753

SILVER SOLID

XS	0110-3754
S	0110-3755
M	0110-3756
L	0110-3757
XL	0110-3758
XXL	0110-3759

FROST GRAY SOLID

XS	0110-3760
S	0110-3761
M	0110-3762
L	0110-3763
XL	0110-3764
XXL	0110-3765

SAFETY ORANGE SOLID

XS	0110-3766
S	0110-3767
M	0110-3768
L	0110-3769
XL	0110-3770
XXL	0110-3771

HI-VIS YELLOW SOLID

XS	0110-3772
S	0110-3773
M	0110-3774
L	0110-3775
XL	0110-3776
XXL	0110-3777



**FLAT BLACK
SOLID**



**SILVER
SOLID**



**GLOSS BLACK
SOLID**



**HI-VIS YELLOW
SOLID**



**SAFETY ORANGE
SOLID**



**FROST GRAY
SOLID**



FUCHSIA

FX-41DS MULTI

ADULT DUAL SPORT

NEW
2015

SAFETY CERTIFICATIONS

This helmet model meets or exceeds both ECE 22.05 and DOT FMVSS-218 motorcycle helmet safety standards.

HELMET WEIGHT

A large FX-41DS weighs 1.68 kg or 3.69 lbs.

SPECIFICATIONS & FEATURES

- An aerodynamic shell design constructed using an advanced lightweight composite poly-alloy.
- A flip-up, flush fit, quick release, single turn screw face shield with side covers. The shield itself is optically correct compound curved, scratch-resistant and protects against UV-rays
- Shield can be removed to allow open face riding or for use with most goggles.
- Shield can also be used without the visor with included side cover kit
- Smoke tinted inner flip down sun shield system with left side slide lever.
- A helmet liner and cheek pads made with a hypoallergenic and antimicrobial nylon, all of which are removable and washable.
- 17 points of ventilation with chin, side, forehead top and rear vents
- Retention system is quick release with sewn on ECE logo.
- Provides ample ear cavity space for most speaker systems
- A clear coat finish to protect paint & graphics
- Comes with a Limited One Year Warranty

NOTE: SEE PAGE 90 FOR THE COLD WEATHER SNOW BREATH GUARD & CHIN CURTAIN



SAFETY ORANGE
MULTI



AFX DOT/ECE Cam
buckle quick release



FROST GRAY
MULTI



	FLAT BLACK MULTI	GLOSS BLACK MULTI	FROST GRAY MULTI	SILVER MULTI	FUCHSIA MULTI	PEARL WHITE MULTI	HI-VIS YELLOW MULTI	SAFETY ORANGE MULTI
PART NUMBERS	XS 0110-3911 S 0110-3912 M 0110-3913 L 0110-3914 XL 0110-3915 XXL 0110-3916	XS 0110-3917 S 0110-3918 M 0110-3919 L 0110-3920 XL 0110-3921 XXL 0110-3922	XS 0110-3923 S 0110-3924 M 0110-3925 L 0110-3926 XL 0110-3927 XXL 0110-3928	XS 0110-3929 S 0110-3930 M 0110-3931 L 0110-3932 XL 0110-3933 XXL 0110-3934	XS 0110-3935 S 0110-3936 M 0110-3937 L 0110-3938 XL 0110-3939 XXL N/A	XS 0110-3940 S 0110-3941 M 0110-3942 L 0110-3943 XL 0110-3944 XXL 0110-3945	XS 0110-3946 S 0110-3947 M 0110-3948 L 0110-3949 XL 0110-3950 XXL 0110-3951	XS 0110-3952 S 0110-3953 M 0110-3954 L 0110-3955 XL 0110-3956 XXL 0110-3957



**PEARL WHITE
MULTI**



**FUCHSIA
MULTI**



**GLOSS
BLACK MULTI**



**SILVER
MULTI**



**FLAT BLACK
MULTI**



**HI-VIS YELLOW
MULTI**

FX-39DS SOLID

ADULT DUAL SPORT / AVAILABLE IN 3XL AND 4XL

SAFETY CERTIFICATIONS

This helmet model meets or exceeds both ECE 22.05 and DOT FMVSS-218 motorcycle helmet safety standards. Note FX-39DS big head sizing 3XL/4XL is DOT approved only.

HELMET WEIGHT

A large-size FX-39DS weighs 1.59 kg or 3.5 lbs

SPECIFICATIONS & FEATURES

- An aerodynamic shell design constructed using an advanced lightweight composite poly-alloy
- A flip-up, flush-fit, quick-release, single-turn screw face shield with side covers. The shield itself is optically correct, compound-curved, scratch-resistant and protects against UV-rays
- There are several tinted shields available for this model
- Shield can be removed to allow open face riding or goggle use
- A helmet liner and cheek pads made with a hypo-allergenic and anti-microbial nylon, all of which are removable and washable
- 9 points of ventilation with chin, side, forehead, top and rear vents
- Retention system is quick release with sewn on ECE logo
- Provides ample ear cavity space for speakers
- A clear coat finish to protect paint & graphics
- Comes with a Limited One Year Warranty

NOTE: SEE PAGE 89 FOR THE COLD WEATHER SNOW SHIELD

NOTE: SEE PAGE 90 FOR THE COLD WEATHER SNOW BREATH GUARD & CHIN CURTAIN



FROST GRAY SOLID



FUCHSIA SOLID



LINER



AFX DOT/ECE Cam buckle quick release



INCLUDES FLAT BLACK SIDE-COVERS AND SCREW PLUG FOR SHIELD USE WITHOUT THE VISOR



BEFORE AFTER

SAFETY ORANGE SOLID

XS	0110-4067
S	0110-4068
M	0110-4069
L	0110-4070
XL	0110-4071
XXL	0110-4072
3XL	0110-4073
4XL	0110-4074

PART NUMBERS FX39DS	GLOSS BLACK SOLID	FLAT BLACK SOLID	SILVER SOLID	PEARL WHITE SOLID	HI-VIS YELLOW	RED SOLID	FROST GRAY SOLID	FUCHSIA SOLID							
	XS	0110-2442	XS	0110-2448	XS	0110-2454	XS	0110-2460	XS	0110-2466	XS	0110-3146	XS	0110-4054	XS
S	0110-2443	S	0110-2449	S	0110-2455	S	0110-2461	S	0110-2467	S	0110-3147	S	0110-4055	S	0110-4063
M	0110-2444	M	0110-2450	M	0110-2456	M	0110-2462	M	0110-2468	M	0110-3148	M	0110-4056	M	0110-4064
L	0110-2445	L	0110-2451	L	0110-2457	L	0110-2463	L	0110-2469	L	0110-3149	L	0110-4057	L	0110-4065
XL	0110-2446	XL	0110-2452	XL	0110-2458	XL	0110-2464	XL	0110-2470	XL	0110-3150	XL	0110-4058	XL	0110-4066
XXL	0110-2447	XXL	0110-2453	XXL	0110-2459	XXL	0110-2465	XXL	0110-2471	XXL	0110-3151	XXL	0110-4059	XXL	N/A
3XL	0110-3152	3XL	0110-3154	3XL	0110-3156	3XL	0110-3158	3XL	0110-3160	3XL	N/A	3XL	0110-4060	3XL	N/A
4XL	0110-3153	4XL	0110-3155	4XL	0110-3157	4XL	0110-3159	4XL	0110-3161	4XL	N/A	4XL	0110-4061	4XL	N/A



HI-VIS
YELLOW



PEARL WHITE
SOLID



FLAT BLACK
SOLID



RED
SOLID



SILVER
SOLID



GLOSS BLACK
SOLID



SAFETY ORANGE
SOLID

FX-39DS STRIKE

ADULT DUAL SPORT / AVAILABLE IN 3XL AND 4XL

SAFETY CERTIFICATIONS

This helmet model meets or exceeds both ECE 22.05 and DOT FMVSS-218 motorcycle helmet safety standards. Note FX-39DS big head sizing 3XL/4XL is DOT approved only.

HELMET WEIGHT

A large-size FX-39DS weighs 1.59 kg or 3.5 lbs

SPECIFICATIONS & FEATURES

- An aerodynamic shell design constructed using an advanced lightweight composite poly-alloy
- A flip-up, flush-fit, quick-release, single-turn screw face shield with side covers. The shield itself is optically correct, compound-curved, scratch-resistant and protects against UV-rays
- There are several tinted shields available for this model
- Shield can be removed to allow open face riding or goggle use
- A helmet liner and cheek pads made with a hypo-allergenic and anti-microbial nylon, all of which are removable and washable
- 9 points of ventilation with chin, side, forehead, top and rear vents
- Retention system is quick release with sewn on ECE logo
- Provides ample ear cavity space for speakers
- A clear coat finish to protect paint & graphics
- Comes with a Limited One Year Warranty

NOTE: SEE PAGE 89 FOR THE COLD WEATHER SNOW SHIELD

NOTE: SEE PAGE 90 FOR THE COLD WEATHER SNOW BREATH GUARD & CHIN CURTAIN



RED STRIKE



AFx DOT/ECE Cam buckle quick release



LINER



INCLUDES FLAT BLACK SIDE-COVERS AND SCREW PLUG FOR SHIELD USE WITHOUT THE VISOR



BEFORE AFTER

BLACK STRIKE

PART NUMBERS	FX39DS	XS	0110-2472
		S	0110-2473
		M	0110-2474
		L	0110-2475
		XL	0110-2476
		XXL	0110-2477
		3XL	0110-3164
4XL	0110-3165		

RED STRIKE

XS	0110-2478
S	0110-2479
M	0110-2480
L	0110-2481
XL	0110-2482
XXL	0110-2483
3XL	0110-3166
4XL	0110-3167

BLUE STRIKE

XS	0110-2484
S	0110-2485
M	0110-2486
L	0110-2487
XL	0110-2488
XXL	0110-2489
3XL	0110-3168
4XL	0110-3169

SILVER STRIKE

XS	0110-2490
S	0110-2491
M	0110-2492
L	0110-2493
XL	0110-2494
XXL	0110-2495
3XL	0110-3170
4XL	0110-3171

WHITE STRIKE

XS	0110-2496
S	0110-2497
M	0110-2498
L	0110-2499
XL	0110-2500
XXL	0110-2501
3XL	N/A
4XL	N/A

SAFETY ORANGE STRIKE

XS	0110-3140
S	0110-3141
M	0110-3142
L	0110-3143
XL	0110-3144
XXL	0110-3145
3XL	0110-3162
4XL	0110-3163



**BLACK
STRIKE**



**SILVER
STRIKE**



**BLUE
STRIKE**



**WHITE
STRIKE**



**SAFETY ORANGE
STRIKE**

FX-39DS MARPAT & WOOD CAMO, OUTER SHIELD

ADULT DUAL SPORT / AVAILABLE IN 3XL AND 4XL

SAFETY CERTIFICATIONS

This helmet model meets or exceeds both ECE 22.05 and DOT FMVSS-218 motorcycle helmet safety standards. Note FX-39DS big head sizing 3XL/4XL is DOT approved only.

HELMET WEIGHT

A large-size FX-39DS weighs 1.59 kg or 3.5 lbs

SPECIFICATIONS & FEATURES

- An aerodynamic shell design constructed using an advanced lightweight composite poly-alloy
- A flip-up, flush-fit, quick-release, single-turn screw face shield with side covers. The shield itself is optically correct, compound-curved, scratch-resistant and protects against UV-rays
- There are several tinted shields available for this model
- Shield can be removed to allow open face riding or goggle use
- A helmet liner and cheek pads made with a hypo-allergenic and anti-microbial nylon, all of which are removable and washable
- 9 points of ventilation with chin, side, forehead, top and rear vents
- Retention system is quick release with sewn on ECE logo
- Provides ample ear cavity space for speakers
- A clear coat finish to protect paint & graphics
- Comes with a Limited One Year Warranty

NOTE: SEE PAGE 89 FOR THE COLD WEATHER SNOW SHIELD

NOTE: SEE PAGE 90 FOR THE COLD WEATHER SNOW BREATH GUARD & CHIN CURTAIN



AFX DOT/ECE Cam buckle quick release



INCLUDES FLAT BLACK SIDE-COVERS AND SCREW PLUG FOR SHIELD USE WITHOUT THE VISOR



LINER



MARPAT CAMO



WOOD CAMO



FX-39DS OUTER SHIELD OPTION

SPECIFICATIONS & FEATURES

3 position 3.5" long shield mounted on outside of the clear shield and moving independently from the clear shield. Will also work with the visor removed and the street side covers installed. Available in light smoke, dark smoke, silver mirror and gold mirror.

PART NUMBERS- 0130-0442
 LIGHT SMOKE - 0130-0443
 DARK SMOKE - 0130-0444
 SILVER MIRROR - 0130-0445
 GOLD MIRROR



BEFORE
MARPAT
CAMO

AFTER
WOOD
CAMO



PART NUMBERS	FX39DS	XS	0110-2695
		S	0110-2696
		M	0110-2697
		L	0110-2698
		XL	0110-2699
		XXL	0110-2700
		3XL	0110-3174
		4XL	0110-3175

PART NUMBERS	FX39DS	XS	0110-2508
		S	0110-2509
		M	0110-2510
		L	0110-2511
		XL	0110-2512
		XXL	0110-2513
		3XL	N/A
		4XL	N/A

FX-39DS URBAN CAMO

ADULT DUAL SPORT / AVAILABLE IN 3XL AND 4XL



**SAFETY ORANGE
URBAN CAMO**



**GREEN
URBAN CAMO**



**URBAN
CAMO**



**YELLOW
URBAN CAMO**

SAFETY CERTIFICATIONS

This helmet model meets or exceeds both ECE 22.05 and DOT FMVSS-218 motorcycle helmet safety standards. Note FX-39DS big head sizing 3XL/4XL is DOT approved only.

HELMET WEIGHT

A large-size FX-39DS weighs 1.59 kg or 3.5 lbs

SPECIFICATIONS & FEATURES

- An aerodynamic shell design constructed using an advanced lightweight composite poly-alloy
- A flip-up, flush-fit, quick-release, single-turn screw face shield with side covers. The shield itself is optically correct, compound-curved, scratch-resistant and protects against UV-rays
- There are several tinted shields available for this model
- Shield can be removed to allow open face riding or goggle use
- A helmet liner and cheek pads made with a hypo-allergenic and anti-microbial nylon, all of which are removable and washable
- 9 points of ventilation with chin, side, forehead, top and rear vents
- Retention system is quick release with sewn on ECE logo
- Provides ample ear cavity space for speakers
- A clear coat finish to protect paint & graphics
- Comes with a Limited One Year Warranty

NOTE: SEE PAGE 89 FOR THE COLD WEATHER SNOW SHIELD

NOTE: SEE PAGE 90 FOR THE COLD WEATHER SNOW BREATH GUARD & CHIN CURTAIN



**AFX DOT/ECE Cam
buckle quick release**



**INCLUDES FLAT BLACK SIDE-COVERS
AND SCREW PLUG FOR SHIELD USE
WITHOUT THE VISOR**



BEFORE AFTER



LINER

BLACK URBAN CAMO

GREEN URBAN CAMO

SAFETY ORANGE URBAN CAMO

YELLOW URBAN CAMO

PART NUMBERS FX39DS	XS	0110-2502
	S	0110-2503
	M	0110-2504
	L	0110-2505
	XL	0110-2506
	XXL	0110-2507
	3XL	0110-3172
	4XL	0110-3173

XS	0110-2800
S	0110-2801
M	0110-2802
L	0110-2803
XL	0110-2804
XXL	0110-2805
3XL	N/A
4XL	N/A

XS	0110-2794
S	0110-2795
M	0110-2796
L	0110-2797
XL	0110-2798
XXL	0110-2799
3XL	N/A
4XL	N/A

XS	0110-2806
S	0110-2807
M	0110-2808
L	0110-2809
XL	0110-2810
XXL	0110-2811
3XL	N/A
4XL	N/A

FX-21 ALPHA

ADULT OFF-ROAD/ATV

**NEW
2015**

SAFETY CERTIFICATIONS

This helmet model meets or exceeds both ECE 22.05 and DOT FMVSS-218 motorcycle helmet safety standards.

HELMET WEIGHT

A large FX-21 weighs 1.34 kg or 2.95 lbs.

SPECIFICATIONS & FEATURES

- An aerodynamic shell design constructed using an advanced lightweight composite poly-alloy.
- Advanced in-molded cone-head ultra lightweight EPS protection system.
- A helmet liner and cheek pads made with a hypoallergenic and antimicrobial nylon, all of which are removable and washable.
- Includes a removable screw-on visor.
- 11 points of ventilation with chin, side, forehead top and rear vents
- Goggle strap guides designed into the helmet.
- A square type D-ring with chin strap holder
- Provides ample ear cavity space for most speaker systems
- A clear coat finish to protect paint & graphics
- Comes with a Limited One Year Warranty

NOTE: SEE PAGE 90 FOR THE COLD WEATHER SNOW BREATH GUARD & CHIN CURTAIN



ORANGE/WHITE



BLUE WHITE

PART NUMBERS	XS	0110-4094
	S	0110-4095
	M	0110-4096
	L	0110-4097
	XL	0110-4098
	XXL	0110-4099

RED WHITE

XS	0110-4100
S	0110-4101
M	0110-4102
L	0110-4103
XL	0110-4104
XXL	0110-4105

FUCHSIA WHITE

XS	0110-4106
S	0110-4107
M	0110-4108
L	0110-4109
XL	0110-4110
XXL	N/A

ORANGE WHITE

XS	0110-4111
S	0110-4112
M	0110-4113
L	0110-4114
XL	0110-4115
XXL	0110-4116

YELLOW WHITE

XS	0110-4117
S	0110-4118
M	0110-4119
L	0110-4120
XL	0110-4121
XXL	0110-4122

GREEN WHITE

XS	0110-4123
S	0110-4124
M	0110-4125
L	0110-4126
XL	0110-4127
XXL	0110-4128



BLUE/WHITE



FUCHSIA/WHITE



RED/WHITE



GREEN/WHITE



YELLOW/WHITE

FX-21 MULTI & SOLID

ADULT OFF-ROAD/ATV

SAFETY CERTIFICATIONS

This helmet model meets or exceeds both ECE 22.05 and DOT FMVSS-218 motorcycle helmet safety standards.

HELMET WEIGHT

A large FX-21 weighs 1.34 kg or 2.95 lbs.

SPECIFICATIONS & FEATURES

- An aerodynamic shell design constructed using an advanced lightweight composite poly-alloy.
- Advanced in-molded cone-head ultra lightweight EPS protection system.
- A helmet liner and cheek pads made with a hypoallergenic and antimicrobial nylon, all of which are removable and washable.
- Includes a removable screw-on visor.
- 11 points of ventilation with chin, side, forehead top and rear vents
- Goggle strap guides designed into the helmet.
- A square type D-ring with chin strap holder
- Provides ample ear cavity space for most speaker systems
- A clear coat finish to protect paint & graphics
- Comes with a Limited One Year Warranty

NOTE: SEE PAGE 90 FOR THE COLD WEATHER SNOW BREATH GUARD & CHIN CURTAIN



FLAT BLACK MULTI



FLAT BLACK SOLID

PART NUMBERS	
XS	0110-3648
S	0110-3649
M	0110-3650
L	0110-3651
XL	0110-3652
XXL	0110-3653

FROST GRAY SOLID

XS	0110-3654
S	0110-3655
M	0110-3656
L	0110-3657
XL	0110-3658
XXL	0110-3659

ORANGE SOLID

XS	0110-3665
S	0110-3666
M	0110-3667
L	0110-3668
XL	0110-3669
XXL	0110-3670

WHITE SOLID

XS	0110-4088
S	0110-4089
M	0110-4090
L	0110-4091
XL	0110-4092
XXL	0110-4093

FLAT BLACK MULTI

XS	0110-3671
S	0110-3672
M	0110-3673
L	0110-3674
XL	0110-3675
XXL	0110-3676

FROST GRAY MULTI

XS	0110-3677
S	0110-3678
M	0110-3679
L	0110-3680
XL	0110-3681
XXL	0110-3682

GLOSS BLACK MULTI

XS	0110-3683
S	0110-3684
M	0110-3685
L	0110-3686
XL	0110-3687
XXL	0110-3688



FROST GRAY MULTI



GLOSS BLACK MULTI



FUCHSIA MULTI



SILVER MULTI



BLUE MULTI



RED MULTI



GREEN MULTI



ORANGE MULTI



WHITE SOLID



ORANGE SOLID



FLAT BLACK SOLID



FROST GRAY SOLID

FUCHSIA MULTI

XS	0110-3689
S	0110-3690
M	0110-3691
L	0110-3692
XL	0110-3693
XXL	N/A

SILVER MULTI

XS	0110-3694
S	0110-3695
M	0110-3696
L	0110-3697
XL	0110-3698
XXL	0110-3699

BLUE MULTI

XS	0110-3700
S	0110-3701
M	0110-3702
L	0110-3703
XL	0110-3704
XXL	0110-3705

RED MULTI

XS	0110-3706
S	0110-3707
M	0110-3708
L	0110-3709
XL	0110-3710
XXL	0110-3711

GREEN MULTI

XS	0110-3718
S	0110-3719
M	0110-3720
L	0110-3721
XL	0110-3722
XXL	0110-3723

ORANGE MULTI

XS	0110-3730
S	0110-3731
M	0110-3732
L	0110-3733
XL	0110-3734
XXL	0110-3735

PART NUMBERS

FX-17/17Y SOLID

ADULT/YOUTH OFF-ROAD/ATV

SAFETY CERTIFICATIONS

This helmet model meets or exceeds both ECE 22.05 and DOT FMVSS-218 motorcycle helmet safety standards. Note FX-17 big head sizing 3XL/4XL is DOT approved only. Note FX-17Y youth helmet sizing YS-YM-YL is DOT approved only.

HELMET WEIGHT

A large FX-17 weighs 1.55 kg or 3.42 lbs.

A large FX-17Y weighs 1.24 kg or 2.73 lbs.

SPECIFICATIONS & FEATURES

- An aerodynamic shell design constructed using an advanced lightweight composite poly-alloy
- A helmet liner and cheek pads made with a hypo-allergenic and anti-microbial nylon, all of which are removable and washable
- A removable screw-on visor
- 11 points of ventilation with chin, side, forehead top and rear vents
- Goggle strap grabbers
- A square type D-ring with chin strap holder
- A clear coat finish to protect paint & graphics
- Comes with a Limited One Year Warranty

SPECIAL FEATURES FOR FX-17Y YOUTH

- This helmet is specifically designed to fit adolescents and small adults
- YLS (Youth Liner System): This helmet can be converted to any of three youth helmet sizes through the simple swapping of liner components

NOTE: SEE PAGE 90 FOR THE COLD WEATHER SNOW BREATH GUARD & CHIN CURTAIN



FROST GRAY SOLID



LINER



NEW 2015

FUCHSIA SOLID

	FLAT BLACK SOLID	OLIVE GREEN SOLID	ORANGE SOLID	HI-VIS YELLOW	SAFETY ORANGE	FROST GRAY SOLID	FUCHSIA SOLID	WHITE SOLID
PART NUMBERS FX17	XS 0110-1750	XS 0110-1756	XS 0110-2314	XS 0110-3041	XS 0110-3049	XS 0110-3431	XS 0110-4075	XS 0110-4080
	S 0110-1751	S 0110-1757	S 0110-2315	S 0110-3042	S 0110-3050	S 0110-3432	S 0110-4076	S 0110-4081
	M 0110-1752	M 0110-1758	M 0110-2316	M 0110-3043	M 0110-3051	M 0110-3433	M 0110-4077	M 0110-4082
	L 0110-1753	L 0110-1759	L 0110-2317	L 0110-3044	L 0110-3052	L 0110-3434	L 0110-4078	L 0110-4083
	XL 0110-1754	XL 0110-1760	XL 0110-2318	XL 0110-3045	XL 0110-3053	XL 0110-3435	XL 0110-4079	XL 0110-4084
	XXL 0110-1755	XXL 0110-1761	XXL 0110-2319	XXL 0110-3046	XXL 0110-3054	XXL 0110-3436	XXL N/A	XXL 0110-4085
	3XL 0110-2586	3XL N/A	3XL 0110-2588	3XL 0110-3047	3XL 0110-3055	3XL 0110-3437	3XL N/A	3XL 0110-4086
	4XL 0110-2587	4XL N/A	4XL 0110-2589	4XL 0110-3048	4XL 0110-3056	4XL 0110-3438	4XL N/A	4XL 0110-4087
PART NUMBERS FX17Y	YS 0111-0545	YS 0111-0548	YS 0111-0690	YS 0111-0782	YS 0111-0779	YS 0111-0892	YS 0111-0946	YS 0111-0949
	YM 0111-0546	YM 0111-0549	YM 0111-0691	YM 0111-0783	YM 0111-0780	YM 0111-0893	YM 0111-0947	YM 0111-0950
	YL 0111-0547	YL 0111-0550	YL 0111-0692	YL 0111-0784	YL 0111-0781	YL 0111-0894	YL 0111-0948	YL 0111-0951

**NEW
2015**



**WHITE
SOLID**



**FLAT BLACK
SOLID**



ORANGE



**OLIVE GREEN
SOLID**



**SAFETY ORANGE
SOLID**



**HI-VIS YELLOW
SOLID**

FX-17/17Y FACTOR, FX-17Y ROCKET

ADULT/YOUTH/OFF-ROAD/ATV

SAFETY CERTIFICATIONS

This helmet model meets or exceeds both ECE 22.05 and DOT FMVSS-218 motorcycle helmet safety standards. Note FX-17 big head sizing 3XL/4XL is DOT approved only. Note FX-17Y youth helmet sizing YS-YM-YL is DOT approved only.

HELMET WEIGHT

A large FX-17 weighs 1.55 kg or 3.42 lbs.

A large FX-17Y weighs 1.24 kg or 2.73 lbs.

SPECIFICATIONS & FEATURES

- An aerodynamic shell design constructed using an advanced lightweight composite poly-alloy
- A helmet liner and cheek pads made with a hypo-allergenic and anti-microbial nylon, all of which are removable and washable
- A removable screw-on visor
- 11 points of ventilation with chin, side, forehead top and rear vents
- Goggle strap grabbers
- A square type D-ring with chin strap holder
- A clear coat finish to protect paint & graphics
- Comes with a Limited One Year Warranty

SPECIAL FEATURES FOR FX-17Y YOUTH

- This helmet is specifically designed to fit adolescents and small adults
- YLS (Youth Liner System): This helmet can be converted to any of three youth helmet sizes through the simple swapping of liner components

NOTE: SEE PAGE 90 FOR THE COLD WEATHER SNOW BREATH GUARD & CHIN CURTAIN



ORANGE MULTI



FLAT BLACK MULTI



LINER

	FLAT BLACK MULTI	FROST GRAY MULTI	GLOSS BLACK MULTI	FUCHSIA MULTI	SILVER MULTI	BLUE MULTI
PART NUMBERS FX17	XS 0110-3439	XS 0110-3446	XS 0110-3453	XS 0110-3460	XS 0110-3465	XS 0110-3472
	S 0110-3440	S 0110-3447	S 0110-3454	S 0110-3461	S 0110-3466	S 0110-3473
	M 0110-3441	M 0110-3448	M 0110-3455	M 0110-3462	M 0110-3467	M 0110-3474
	L 0110-3442	L 0110-3449	L 0110-3456	L 0110-3463	L 0110-3468	L 0110-3475
	XL 0110-3443	XL 0110-3450	XL 0110-3457	XL 0110-3464	XL 0110-3469	XL 0110-3476
	XXL 0110-3444	XXL 0110-3451	XXL 0110-3458	XXL N/A	XXL 0110-3470	XXL 0110-3477
3XL 0110-3445	3XL 0110-3452	3XL 0110-3459	3XL N/A	3XL 0110-3471	3XL 0110-3478	
4XL N/A	4XL N/A	4XL N/A	4XL N/A	4XL N/A	4XL N/A	
PART NUMBERS FX17Y	YS 0111-0895	YS 0111-0898	YS 0111-0901	YS 0111-0904	YS N/A	YS 0111-0907
	YM 0111-0896	YM 0111-0899	YM 0111-0902	YM 0111-0905	YM N/A	YM 0111-0908
	YL 0111-0897	YL 0111-0900	YL 0111-0903	YL 0111-0906	YL N/A	YL 0111-0909



BLUE MULTI



FUCHSIA MULTI



GREEN MULTI



SILVER MULTI



GLOSS BLACK MULTI



YELLOW MULTI



PEARL WHITE MULTI



FROST GRAY MULTI



RED MULTI



ROCKET BOY



ROCKET GIRL



ROCKET BOY

RED MULTI

XS	0110-3479
S	0110-3480
M	0110-3481
L	0110-3482
XL	0110-3483
XXL	0110-3484
3XL	0110-3485
4XL	N/A

PEARL WHITE MULTI

XS	0110-3486
S	0110-3487
M	0110-3488
L	0110-3489
XL	0110-3490
XXL	0110-3491
3XL	0110-3492
4XL	N/A

GREEN MULTI

XS	0110-3493
S	0110-3494
M	0110-3495
L	0110-3496
XL	0110-3497
XXL	0110-3498
3XL	0110-3499
4XL	N/A

YELLOW MULTI

XS	0110-3500
S	0110-3501
M	0110-3502
L	0110-3503
XL	0110-3504
XXL	0110-3505
3XL	0110-3506
4XL	N/A

ORANGE MULTI

XS	0110-3507
S	0110-3508
M	0110-3509
L	0110-3510
XL	0110-3511
XXL	0110-3512
3XL	0110-3513
4XL	N/A

ROCKET GIRL

YS	0111-0578
YM	0111-0579
YL	0111-0580

ROCKET BOY

YS	0111-0581
YM	0111-0582
YL	0111-0583

PART NUMBERS

FX17

FX17Y

FX-17 INFERNO

ADULT OFF-ROAD/ATV

SAFETY CERTIFICATIONS

This helmet model meets or exceeds both ECE 22.05 and DOT FMVSS-218 motorcycle helmet safety standards. Note FX-17 big head sizing 3XL/4XL is DOT approved only.

HELMET WEIGHT

A large FX-17 weighs 1.55 kg or 3.42 lbs.

SPECIFICATIONS & FEATURES

- An aerodynamic shell design constructed using an advanced lightweight composite poly-alloy
- A helmet liner and cheek pads made with a hypo-allergenic and anti-microbial nylon, all of which are removable and washable
- A removable screw-on visor
- 11 points of ventilation with chin, side, forehead top and rear vents
- Goggle strap grabbers
- A square type D-ring with chin strap holder
- A clear coat finish to protect paint & graphics
- Comes with a Limited One Year Warranty

NOTE: SEE PAGE 90 FOR THE COLD WEATHER SNOW BREATH GUARD & CHIN CURTAIN



ORANGE MULTI



LINER



FUCHSIA MULTI



GLOSS BLACK MULTI



FROST GRAY MULTI

GLOSS BLACK MULTI

XS	0110-3547
S	0110-3548
M	0110-3549
L	0110-3550
XL	0110-3551
XXL	0110-3552
3XL	0110-3553
4XL	N/A

FROST GRAY MULTI

XS	0110-3554
S	0110-3555
M	0110-3556
L	0110-3557
XL	0110-3558
XXL	0110-3559
3XL	0110-3560
4XL	N/A

FUCHSIA MULTI

XS	0110-3561
S	0110-3562
M	0110-3563
L	0110-3564
XL	0110-3565
XXL	N/A
3XL	N/A
4XL	N/A

ORANGE MULTI

XS	0110-3566
S	0110-3567
M	0110-3568
L	0110-3569
XL	0110-3570
XXL	0110-3571
3XL	0110-3572
4XL	N/A

PART NUMBERS

WATER DECAL CHANGES WITH BLACK BASE



**BLACK-RED
MULTI**



**BLACK-BLUE
MULTI**



**BLACK-FUCHSIA
MULTI**



**BLACK-GREEN
MULTI**



**BLACK-YELLOW
MULTI**

WATER DECAL CHANGES WITH BLACK BASE

BLACK-FUCHSIA MULTI

XS	0110-3514
S	0110-3515
M	0110-3516
L	0110-3517
XL	0110-3518
XXL	N/A
3XL	N/A
4XL	N/A

BLACK-BLUE MULTI

XS	0110-3519
S	0110-3520
M	0110-3521
L	0110-3522
XL	0110-3523
XXL	0110-3524
3XL	0110-3525
4XL	N/A

BLACK-RED MULTI

XS	0110-3526
S	0110-3527
M	0110-3528
L	0110-3529
XL	0110-3530
XXL	0110-3531
3XL	0110-3532
4XL	N/A

BLACK-GREEN MULTI

XS	0110-3533
S	0110-3534
M	0110-3535
L	0110-3536
XL	0110-3537
XXL	0110-3538
3XL	0110-3539
4XL	N/A

BLACK-YELLOW MULTI

XS	0110-3540
S	0110-3541
M	0110-3542
L	0110-3543
XL	0110-3544
XXL	0110-3545
3XL	0110-3546
4XL	N/A

PART NUMBERS

FX-17 GEAR

ADULT OFF-ROAD/ATV

SAFETY CERTIFICATIONS

This helmet model meets or exceeds both ECE 22.05 and DOT FMVSS-218 motorcycle helmet safety standards. Note FX-17 big head sizing 3XL/4XL is DOT approved only.

HELMET WEIGHT

A large FX-17 weighs 1.55 kg or 3.42 lbs.

SPECIFICATIONS & FEATURES

- An aerodynamic shell design constructed using an advanced lightweight composite poly-alloy
- A helmet liner and cheek pads made with a hypo-allergenic and anti-microbial nylon, all of which are removable and washable
- A removable screw-on visor
- 11 points of ventilation with chin, side, forehead top and rear vents
- Goggle strap grabbers
- A square type D-ring with chin strap holder
- A clear coat finish to protect paint & graphics
- Comes with a Limited One Year Warranty

NOTE: SEE PAGE 90 FOR THE COLD WEATHER SNOW BREATH GUARD & CHIN CURTAIN



FROST GRAY MULTI



LINER



FLAT BLACK MULTI



FLAT BLACK MULTI

XS	0110-3573
S	0110-3574
M	0110-3575
L	0110-3576
XL	0110-3577
XXL	0110-3578
3XL	0110-3579
4XL	N/A

FROST GRAY MULTI

XS	0110-3580
S	0110-3581
M	0110-3582
L	0110-3583
XL	0110-3584
XXL	0110-3585
3XL	0110-3586
4XL	N/A

GLOSS BLACK MULTI

XS	0110-3587
S	0110-3588
M	0110-3589
L	0110-3590
XL	0110-3591
XXL	0110-3592
3XL	0110-3593
4XL	N/A

SILVER MULTI

XS	0110-3594
S	0110-3595
M	0110-3596
L	0110-3597
XL	0110-3598
XXL	0110-3599
3XL	0110-3600
4XL	N/A

FUCHSIA MULTI

XS	0110-3601
S	0110-3602
M	0110-3603
L	0110-3604
XL	0110-3605
XXL	N/A
3XL	N/A
4XL	N/A

BLUE MULTI

XS	0110-3606
S	0110-3607
M	0110-3608
L	0110-3609
XL	0110-3610
XXL	0110-3611
3XL	0110-3612
4XL	N/A

PART NUMBERS



**BLUE
MULTI**



**FUCHSIA
MULTI**



**GREEN
MULTI**



**SILVER
MULTI**



**GLOSS BLACK
MULTI**



**YELLOW
MULTI**



**RED
MULTI**



**PEARL WHITE
MULTI**



**ORANGE
MULTI**

**RED
MULTI**

PART NUMBERS	
XS	0110-3613
S	0110-3614
M	0110-3615
L	0110-3616
XL	0110-3617
XXL	0110-3618
3XL	0110-3619
4XL	N/A

**PEARL WHITE
MULTI**

XS	0110-3620
S	0110-3621
M	0110-3622
L	0110-3623
XL	0110-3624
XXL	0110-3625
3XL	0110-3626
4XL	N/A

**GREEN
MULTI**

XS	0110-3627
S	0110-3628
M	0110-3629
L	0110-3630
XL	0110-3631
XXL	0110-3632
3XL	0110-3633
4XL	N/A

**YELLOW
MULTI**

XS	0110-3634
S	0110-3635
M	0110-3636
L	0110-3637
XL	0110-3638
XXL	0110-3639
3XL	0110-3640
4XL	N/A

**ORANGE
MULTI**

XS	0110-3641
S	0110-3642
M	0110-3643
L	0110-3644
XL	0110-3645
XXL	0110-3646
3XL	0110-3647
4XL	N/A

FX-17 DANGER

ADULT OFF-ROAD/ATV

SAFETY CERTIFICATIONS

This helmet model meets or exceeds both ECE 22.05 and DOT FMVSS-218 motorcycle helmet safety standards. Note FX-17 big head sizing 3XL/4XL is DOT approved only.

HELMET WEIGHT

A large FX-17 weighs 1.55 kg or 3.42 lbs.

SPECIFICATIONS & FEATURES

- An aerodynamic shell design constructed using an advanced lightweight composite poly-alloy
- A helmet liner and cheek pads made with a hypo-allergenic and anti-microbial nylon, all of which are removable and washable
- A removable screw-on visor
- 11 points of ventilation with chin, side, forehead top and rear vents
- Goggle strap grabbers
- A square type D-ring with chin strap holder
- A clear coat finish to protect paint & graphics
- Comes with a Limited One Year Warranty

NOTE: SEE PAGE 90 FOR THE COLD WEATHER SNOW BREATH GUARD & CHIN CURTAIN



RED
MULTI



LINER



RED
MULTI

PART NUMBERS	XS	N/A
	S	0110-3818
	M	0110-3819
	L	0110-3820
	XL	0110-3821
	XXL	0110-3822
	3XL	N/A
	4XL	N/A

FX-17/17Y FREEDOM, REBEL, STEALTH

ADULT/YOUTH OFF-ROAD/ATV



STEALTH



FREEDOM WHITE



REBEL BLACK



REBEL ORANGE



LINER



FREEDOM BLACK

SAFETY CERTIFICATIONS

This helmet model meets or exceeds both ECE 22.05 and DOT FMVSS-218 motorcycle helmet safety standards. Note FX-17 big head sizing 3XL/4XL is DOT approved only. Note FX-17Y youth helmet sizing YS-YM-YL is DOT approved only.

HELMET WEIGHT

A large FX-17 weighs 1.55 kg or 3.42 lbs.
A large FX-17Y weighs 1.24 kg or 2.73 lbs.

SPECIFICATIONS & FEATURES

- An aerodynamic shell design constructed using an advanced lightweight composite poly-alloy
- A helmet liner and cheek pads made with a hypo-allergenic and anti-microbial nylon, all of which are removable and washable
- A removable screw-on visor
- 11 points of ventilation with chin, side, forehead top and rear vents
- Goggle strap grabbers
- A square type D-ring with chin strap holder
- A clear coat finish to protect paint & graphics
- Comes with a Limited One Year Warranty

SPECIAL FEATURES FOR FX-17Y YOUTH

- This helmet is specifically designed to fit adolescents and small adults
- YLS (Youth Liner System): This helmet can be converted to any of three youth helmet sizes through the simple swapping of liner components

NOTE: SEE PAGE 90 FOR THE COLD WEATHER SNOW BREATH GUARD & CHIN CURTAIN

	FREEDOM BLACK		FREEDOM WHITE		REBEL BLACK		REBEL ORANGE		STEALTH	
PART NUMBERS	FX17	XS 0110-2368	XS 0110-2374	XS 0110-2380	XS 0110-2386	XS 0110-2362				
		S 0110-2369	S 0110-2375	S 0110-2381	S 0110-2387	S 0110-2363				
		M 0110-2370	M 0110-2376	M 0110-2382	M 0110-2388	M 0110-2364				
		L 0110-2371	L 0110-2377	L 0110-2383	L 0110-2389	L 0110-2365				
		XL 0110-2372	XL 0110-2378	XL 0110-2384	XL 0110-2390	XL 0110-2366				
		XXL 0110-2373	XXL 0110-2379	XXL 0110-2385	XXL 0110-2391	XXL 0110-2367				
	YS N/A	YS N/A	YS 0111-0696	YS N/A	YS 0111-0693					
	YM N/A	YM N/A	YM 0111-0697	YM N/A	YM 0111-0694					
	YL N/A	YL N/A	YL 0111-0698	YL N/A	YL 0111-0695					

FX-17/17Y STUNT

ADULT/YOUTH OFF-ROAD/ATV

SAFETY CERTIFICATIONS

This helmet model meets or exceeds both ECE 22.05 and DOT FMVSS-218 motorcycle helmet safety standards. Note FX-17 big head sizing 3XL/4XL is DOT approved only. Note FX-17Y youth helmet sizing YS-YM-YL is DOT approved only.

HELMET WEIGHT

A large FX-17 weighs 1.55 kg or 3.42 lbs.

A large FX-17Y weighs 1.24 kg or 2.73 lbs.

SPECIFICATIONS & FEATURES

- An aerodynamic shell design constructed using an advanced lightweight composite poly-alloy
- A helmet liner and cheek pads made with a hypo-allergenic and anti-microbial nylon, all of which are removable and washable
- A removable screw-on visor
- 11 points of ventilation with chin, side, forehead top and rear vents
- Goggle strap grabbers
- A square type D-ring with chin strap holder
- A clear coat finish to protect paint & graphics
- Comes with a Limited One Year Warranty

SPECIAL FEATURES FOR FX-17Y YOUTH

- This helmet is specifically designed to fit adolescents and small adults
- YLS (Youth Liner System): This helmet can be converted to any of three youth helmet sizes through the simple swapping of liner components

NOTE: SEE PAGE 90 FOR THE COLD WEATHER SNOW BREATH GUARD & CHIN CURTAIN



**E-GREEN STUNT
BLACK**



LINER



	RED STUNT P-WHITE	E-BLUE STUNT SILVER	SILVER STUNT BLACK	ORANGE STUNT P-WHITE	YELLOW STUNT P-WHITE	E-GREEN STUNT BLACK	PINK STUNT P-WHITE
PART NUMBERS FX17	XS 0110-2520	XS 0110-2526	XS 0110-2514	XS 0110-2556	XS 0110-2550	XS 0110-2538	XS 0110-2532
	S 0110-2521	S 0110-2527	S 0110-2515	S 0110-2557	S 0110-2551	S 0110-2539	S 0110-2533
	M 0110-2522	M 0110-2528	M 0110-2516	M 0110-2558	M 0110-2552	M 0110-2540	M 0110-2534
	L 0110-2523	L 0110-2529	L 0110-2517	L 0110-2559	L 0110-2553	L 0110-2541	L 0110-2535
	XL 0110-2524	XL 0110-2530	XL 0110-2518	XL 0110-2560	XL 0110-2554	XL 0110-2542	XL 0110-2536
	XXL 0110-2525	XXL 0110-2531	XXL 0110-2519	XXL 0110-2561	XXL 0110-2555	XXL 0110-2543	XXL 0110-2537
PART NUMBERS FX17Y	YS 0111-0716	YS 0111-0719	YS 0111-0713	YS 0111-0734	YS 0111-0731	YS 0111-0725	YS 0111-0722
	YM 0111-0717	YM 0111-0720	YM 0111-0714	YM 0111-0735	YM 0111-0732	YM 0111-0726	YM 0111-0723
	YL 0111-0718	YL 0111-0721	YL 0111-0715	YL 0111-0736	YL 0111-0733	YL 0111-0727	YL 0111-0724



SILVER STUNT
BLACK



RED STUNT
P-WHITE



PINK STUNT
P-WHITE



SILVER STUNT
P-WHITE



YELLOW STUNT
P-WHITE



ORANGE STUNT
P-WHITE



SILVER STUNT
P-WHITE



E-BLUE STUNT
SILVER

PART NUMBERS	FX17	XS	0110-2544
		S	0110-2545
		M	0110-2546
		L	0110-2547
		XL	0110-2548
XXL	0110-2549		
<hr/>			
PART NUMBERS	FX17Y	YS	0111-0728
		YM	0111-0729
		YL	0111-0730

FX-17 MARPAT/URBAN CAMO/CAMO

ADULT / YOUTH / OFF-ROAD/ATV

SAFETY CERTIFICATIONS

This helmet model meets or exceeds both ECE 22.05 and DOT FMVSS-218 motorcycle helmet safety standards. Note FX-17 big head sizing 3XL/4XL is DOT approved only. Note FX-17Y youth helmet sizing YS-YM-YL is DOT approved only.

HELMET WEIGHT

A large FX-17 weighs 1.55 kg or 3.42 lbs.
A large FX-17Y weighs 1.24 kg or 2.73 lbs.

SPECIFICATIONS & FEATURES

- An aerodynamic shell design constructed using an advanced lightweight composite poly-alloy
- A helmet liner and cheek pads made with a hypo-allergenic and anti-microbial nylon, all of which are removable and washable
- A removable screw-on visor
- 11 points of ventilation with chin, side, forehead top and rear vents
- Goggle strap grabbers
- A square type D-ring with chin strap holder
- A clear coat finish to protect paint & graphics
- Comes with a Limited One Year Warranty

SPECIAL FEATURES FOR FX-17Y YOUTH

- This helmet is specifically designed to fit adolescents and small adults
- YLS (Youth Liner System): This helmet can be converted to any of three youth helmet sizes through the simple swapping of liner components

NOTE: SEE PAGE 90 FOR THE COLD WEATHER SNOW BREATH GUARD & CHIN CURTAIN

FX-17 MARPAT CAMO



MARPAT CAMO



FX-17 CAMO



CAMO



FX-17 URBAN CAMO



LINER



HI-VIS YELLOW URBAN CAMO



BLACK URBAN CAMO

MARPAT CAMO

FX17	XS	0110-2707
	S	0110-2708
	M	0110-2709
	L	0110-2710
	XL	0110-2711
	XXL	0110-2712
	3XL	0110-2713
4XL	0110-2714	

BLACK URBAN CAMO

XS	0110-2701
S	0110-2702
M	0110-2703
L	0110-2704
XL	0110-2705
XXL	0110-2706
3XL	0110-2715
4XL	0110-2716

HI-VIS YELLOW URBAN CAMO

XS	0110-3025
S	0110-3026
M	0110-3027
L	0110-3028
XL	0110-3029
XXL	0110-3030
3XL	0110-3031
4XL	0110-3032

SAFETY ORANGE URBAN CAMO

XS	0110-3033
S	0110-3034
M	0110-3035
L	0110-3036
XL	0110-3037
XXL	0110-3038
3XL	0110-3039
4XL	0110-3040

CAMO

XS	0110-1816
S	0110-1817
M	0110-1818
L	0110-1819
XL	0110-1820
XXL	0110-1821
3XL	0110-2596
4XL	0110-2597



SAFETY ORANGE URBAN CAMO

FX17Y	YS	0111-0584
	YM	0111-0585
	YL	0111-0586

FX-17Y TRAP

YOUTH OFF-ROAD/ATV

SAFETY CERTIFICATIONS

This helmet model meets or exceeds DOT FM-VSS-218 motorcycle helmet safety standards.

HELMET WEIGHT

A large FX-17Y weighs 1.24 kg or 2.73 lbs.

SPECIFICATIONS & FEATURES

- An aerodynamic shell design constructed using an advanced lightweight composite poly-alloy
- A helmet liner and cheek pads made with a hypo-allergenic and anti-microbial nylon, all of which are removable and washable
- A removable screw-on visor
- 11 points of ventilation with chin, side, forehead top and rear vents
- Goggle strap grabbers
- A square type D-ring with chin strap holder
- A clear coat finish to protect paint & graphics
- Comes with a Limited One Year Warranty

SPECIAL FEATURES FOR FX-17Y YOUTH

- This helmet is specifically designed to fit adolescents and small adults
- YLS (Youth Liner System): This helmet can be converted to any of three youth helmet sizes through the simple swapping of liner components

NOTE: SEE PAGE 90 FOR THE COLD WEATHER SNOW BREATH GUARD & CHIN CURTAIN



ORANGE WEB W/
ORANGE



BLACK WEB W/
RED



BLUE WEB W/
BLUE



LINER



YELLOW WEB W/
YELLOW



RED WEB W/
RED



FUCHSIA WEB W/
FUCHSIA



GREEN WEB W/
GREEN

PART NUMBERS
FX17Y

RED WEB W/RED

YS 0111-0845
YM 0111-0846
YL 0111-0847

BLUE WEB W/BLUE

YS 0111-0848
YM 0111-0849
YL 0111-0850

FUCHSIA WEB W/ FUCHSIA

YS 0111-0851
YM 0111-0852
YL 0111-0853

BLACK WEB W/ RED

YS 0111-0854
YM 0111-0855
YL 0111-0856

GREEN WEB W/ GREEN

YS 0111-0857
YM 0111-0858
YL 0111-0859

YELLOW WEB W/ YELLOW

YS 0111-0860
YM 0111-0861
YL 0111-0862

ORANGE WEB W/ ORANGE

YS 0111-0863
YM 0111-0864
YL 0111-0865

FX-19 VIBE

ADULT OFF-ROAD/ATV

SAFETY CERTIFICATIONS

This helmet model meets or exceeds both ECE 22.05 and DOT FMVSS-218 motorcycle helmet safety standards.

HELMET WEIGHT

A large FX-19 weighs 1.49 kg or 3.28 lbs.

SPECIFICATIONS & FEATURES

- An aerodynamic shell design constructed using an advanced lightweight composite poly-alloy
- A helmet liner and cheek pads made with a hypo-allergenic and anti-microbial nylon, all of which are removable and washable
- A removable screw-on visor
- 13 points of ventilation with chin, side, forehead top and rear vents
- Goggle strap grabbers
- A square type D-ring with chin strap holder
- A clear coat finish to protect paint & graphics
- Comes with a Limited One Year Warranty

NOTE: SEE PAGE 90 FOR THE COLD WEATHER SNOW BREATH GUARD & CHIN CURTAIN



ORANGE
MULTI



RED MULTI

XS	0110-3260
S	0110-3261
M	0110-3262
L	0110-3263
XL	0110-3264
XXL	0110-3265

BLUE MULTI

XS	0110-3266
S	0110-3267
M	0110-3268
L	0110-3269
XL	0110-3270
XXL	0110-3271

LIGHT BLUE & YELLOW MULTI

XS	0110-3272
S	0110-3273
M	0110-3274
L	0110-3275
XL	0110-3276
XXL	0110-3277

FUCHSIA MULTI

XS	0110-3278
S	0110-3279
M	0110-3280
L	0110-3281
XL	0110-3282
XXL	0110-3283

ORANGE MULTI

XS	0110-3284
S	0110-3285
M	0110-3286
L	0110-3287
XL	0110-3288
XXL	0110-3289

GREEN MULTI

XS	0110-3290
S	0110-3291
M	0110-3292
L	0110-3293
XL	0110-3294
XXL	0110-3295

SILVER MULTI

XS	0110-3296
S	0110-3297
M	0110-3298
L	0110-3299
XL	0110-3300
XXL	0110-3301

YELLOW MULTI

XS	0110-3302
S	0110-3303
M	0110-3304
L	0110-3305
XL	0110-3306
XXL	0110-3307

PART NUMBERS



LIGHT BLUE & YELLOW
MULTI



RED
MULTI



BLUE
MULTI



FUCHSIA
MULTI



GREEN
MULTI



SILVER
MULTI



YELLOW
MULTI

FX-19 SOLID & MULTI

ADULT OFF-ROAD/ATV

SAFETY CERTIFICATIONS

This helmet model meets or exceeds both ECE 22.05 and DOT FMVSS-218 motorcycle helmet safety standards.

HELMET WEIGHT

A large FX-19 weighs 1.49 kg or 3.28 lbs.

SPECIFICATIONS & FEATURES

- An aerodynamic shell design constructed using an advanced lightweight composite poly-alloy
- A helmet liner and cheek pads made with a hypo-allergenic and anti-microbial nylon, all of which are removable and washable
- A removable screw-on visor
- 13 points of ventilation with chin, side, forehead top and rear vents
- Goggle strap grabbers
- A square type D-ring with chin strap holder
- A clear coat finish to protect paint & graphics
- Comes with a Limited One Year Warranty

NOTE: SEE PAGE 90 FOR THE COLD WEATHER SNOW BREATH GUARD & CHIN CURTAIN



SAFETY ORANGE MULTI



SAFETY ORANGE SOLID



HI-VIS YELLOW SOLID



FLAT BLACK SOLID



FLAT OLIVE DRAB SOLID

FLAT BLACK SOLID

XS	0110-3057
S	0110-3058
M	0110-3059
L	0110-3060
XL	0110-3061
XXL	0110-3062

SAFETY ORANGE SOLID

XS	0110-3063
S	0110-3064
M	0110-3065
L	0110-3066
XL	0110-3067
XXL	0110-3068

HI-VIS YELLOW SOLID

XS	0110-3069
S	0110-3070
M	0110-3071
L	0110-3072
XL	0110-3073
XXL	0110-3074

FLAT OLIVE DRAB SOLID

XS	0110-3075
S	0110-3076
M	0110-3077
L	0110-3078
XL	0110-3079
XXL	0110-3080

FLAT BLACK MULTI

XS	0110-3081
S	0110-3082
M	0110-3083
L	0110-3084
XL	0110-3085
XXL	0110-3086

RED MULTI

XS	0110-3087
S	0110-3088
M	0110-3089
L	0110-3090
XL	0110-3091
XXL	0110-3092

BLUE MULTI

XS	0110-3093
S	0110-3094
M	0110-3095
L	0110-3096
XL	0110-3097
XXL	0110-3098

PART NUMBERS



**BLUE
MULTI**



**GLOSS BLACK
MULTI**



**SILVER
MULTI**



**PINK
MULTI**



**GREEN
MULTI**



**YELLOW
MULTI**



**FLAT BLACK
MULTI**



**RED
MULTI**



**PEARL WHITE
MULTI**

**GLOSS BLACK
MULTI**

PART NUMBERS	XS	0110-3099
	S	0110-3100
	M	0110-3101
	L	0110-3102
	XL	0110-3103
	XXL	0110-3104

**SAFETY ORANGE
MULTI**

XS	0110-3105
S	0110-3106
M	0110-3107
L	0110-3108
XL	0110-3109
XXL	0110-3110

**GREEN
MULTI**

XS	0110-3111
S	0110-3112
M	0110-3113
L	0110-3114
XL	0110-3115
XXL	0110-3116

**PINK
MULTI**

XS	0110-3117
S	0110-3118
M	0110-3119
L	0110-3120
XL	0110-3121
XXL	N/A

**YELLOW
MULTI**

XS	0110-3122
S	0110-3123
M	0110-3124
L	0110-3125
XL	0110-3126
XXL	0110-3127

**SILVER
MULTI**

XS	0110-3128
S	0110-3129
M	0110-3130
L	0110-3131
XL	0110-3132
XXL	0110-3133

**PEARL WHITE
MULTI**

XS	0110-3134
S	0110-3135
M	0110-3136
L	0110-3137
XL	0110-3138
XXL	0110-3139

FX-55 SOLID

ADULT OPEN-FACE

SAFETY CERTIFICATIONS

This helmet model meets or exceeds both ECE 22.05 and DOT FMVSS-218 motorcycle helmet safety standards.

HELMET WEIGHT

A large FX-55 with shield, visor and chin bar attached weighs 1.68 kg or 3.69 lbs.

SPECIFICATIONS & FEATURES

- An aerodynamic shell design constructed using an advanced lightweight composite poly-alloy.
- Helmet can be configured one of seven different ways. Ships with all 7 parts included
- 1. Helmet with standard visor, shield, and chin bar (standard configuration)
- 2. Helmet with standard visor and shield
- 3. Helmet with shield and chin bar
- 4. Helmet with shield
- 5. Helmet with standard visor
- 6. Helmet with short visor
- 7. Helmet with mx vent chin bar and standard visor
- A flip-up, flush fit, quick release, single turn screw face shield. The shield itself is optically correct compound curved, scratch-resistant and protects against UV-rays
- Smoke tinted inner flip down sun shield system with left side slide lever.
- A helmet liner and cheek pads made with a hypoallergenic and antimicrobial nylon, all of which are removable and washable.
- 10 points of ventilation with chin, side, forehead top and rear vents
- Retention system is quick release with sewn on ECE logo.
- Provides ample ear cavity space for most speaker systems
- A clear coat finish to protect paint & graphics
- Comes with a Limited One Year Warranty



PEARL WHITE SOLID



#1



#2



#3



#4



#5



#6



Includes short visor, MX vent and chin bar lock covers



#7



FUCHSIA SOLID

NEW 2015



**FLAT BLACK
SOLID**



**SILVER
SOLID**



**GLOSS BLACK
SOLID**



**HI-VIS YELLOW
SOLID**



**SAFETY ORANGE
SOLID**



**FROST GRAY
SOLID**

FLAT BLACK SOLID FROST GRAY SOLID GLOSS BLACK SOLID SILVER SOLID

SAFETY ORANGE SOLID HI-VIS YELLOW SOLID PEARL WHITE SOLID FUCHSIA SOLID

PART NUMBERS	XS 0104-1231	XS 0104-1237	XS 0104-1243	XS 0104-1249	XS 0104-1255	XS 0104-1261	XS 0104-1267	XS 0104-1570
	S 0104-1232	S 0104-1238	S 0104-1244	S 0104-1250	S 0104-1256	S 0104-1262	S 0104-1268	S 0104-1571
	M 0104-1233	M 0104-1239	M 0104-1245	M 0104-1251	M 0104-1257	M 0104-1263	M 0104-1269	M 0104-1572
	L 0104-1234	L 0104-1240	L 0104-1246	L 0104-1252	L 0104-1258	L 0104-1264	L 0104-1270	L 0104-1573
	XL 0104-1235	XL 0104-1241	XL 0104-1247	XL 0104-1253	XL 0104-1259	XL 0104-1265	XL 0104-1271	XL 0104-1574
	XXL 0104-1236	XXL 0104-1242	XXL 0104-1248	XXL 0104-1254	XXL 0104-1260	XXL 0104-1266	XXL 0104-1272	XXL N/A

FX-55 MULTI

ADULT OPEN-FACE

**NEW
2015**

SAFETY CERTIFICATIONS

This helmet model meets or exceeds both ECE 22.05 and DOT FMVSS-218 motorcycle helmet safety standards.

HELMET WEIGHT

A large FX-55 with shield, visor and chin bar attached weighs 1.68 kg or 3.69 lbs.

SPECIFICATIONS & FEATURES

- An aerodynamic shell design constructed using an advanced lightweight composite poly-alloy.
- Helmet can be configured one of seven different ways. Ships with all 7 parts included
- 1. Helmet with standard visor, shield, and chin bar (standard configuration)
- 2. Helmet with standard visor and shield
- 3. Helmet with shield and chin bar
- 4. Helmet with shield
- 5. Helmet with standard visor
- 6. Helmet with short visor
- 7. Helmet with mx vent chin bar and standard visor
- A flip-up, flush fit, quick release, single turn screw face shield. The shield itself is optically correct compound curved, scratch-resistant and protects against UV-rays
- Smoke tinted inner flip down sun shield system with left side slide lever.
- A helmet liner and cheek pads made with a hypoallergenic and antimicrobial nylon, all of which are removable and washable.
- 10 points of ventilation with chin, side, forehead top and rear vents
- Retention system is quick release with sewn on ECE logo.
- Provides ample ear cavity space for most speaker systems
- A clear coat finish to protect paint & graphics
- Comes with a Limited One Year Warranty



**FROST GRAY
MULTI**



Includes short visor, MX vent and chin bar lock covers

FLAT BLACK MULTI

GLOSS BLACK MULTI

FROST GRAY MULTI

FUCHSIA MULTI

PEARL WHITE MULTI

SILVER MULTI

HI-VIS YELLOW MULTI

SAFETY ORANGE MULTI

PART NUMBERS	XS	S	M	L	XL	XXL	XS	S	M	L	XL	XXL	XS	S	M	L	XL	XXL	XS	S	M	L	XL	XXL	XS	S	M	L	XL	XXL																		
	0104-1575	0104-1576	0104-1237	0104-1578	0104-1579	0104-1580	0104-1581	0104-1582	0104-1583	0104-1584	0104-1585	0104-1586	0104-1587	0104-1588	0104-1589	0104-1590	0104-1591	0104-1592	0104-1593	0104-1594	0104-1595	0104-1596	0104-1597	N/A	0104-1598	0104-1599	0104-1600	0104-1601	0104-1602	0104-1603	0104-1604	0104-1605	0104-1606	0104-1607	0104-1608	0104-1609	0104-1610	0104-1611	0104-1612	0104-1613	0104-1614	0104-1615	0104-1616	0104-1617	0104-1618	0104-1619	0104-1620	0104-1621



**SAFETY ORANGE
MULTI**



**FLAT BLACK
MULTI**



**SILVER
MULTI**



**HI-VIS YELLOW
MULTI**



**GLOSS BLACK
MULTI**



**PEARL WHITE
MULTI**



**FUCHSIA
MULTI**

FX-50 SOLID

ADULT OPEN-FACE WITH INNER SHIELD

SAFETY CERTIFICATIONS

This helmet model meets or exceeds both ECE 22.05 and DOT FMVSS-218 motorcycle helmet safety standards.

HELMET WEIGHT

A large FX-50 helmet weighs 1.3 kg or 2.80 lbs.

SPECIFICATIONS & FEATURES

- An aerodynamic shell design constructed using an advanced lightweight composite poly-alloy
- Helmet can be configured one of four different ways. Ships with all parts included
- 1. Helmet with visor and shield (standard configuration)
- 2. Helmet with visor
- 3. Helmet with shield
- 4. Helmet only
- A helmet liner and cheek pads made with a hypo-allergenic and anti-microbial nylon, all of which are removable and washable
- A removable screw-on visor/side cover
- A flush-fit, quick-release, single-turn screw face shield. The shield itself is optically correct, compound-curved, scratch-resistant and protects against UV-rays
- There are several tinted shields available for this model
- 4 points of ventilation with forehead and top vents
- Quick release chinstrap system
- Provides ample ear cavity space for speakers
- A clear coat finish to protect paint & graphics
- Includes visor colored side-covers for shield use without the visor
- Smoke flip down inner sun shield
- Comes with a Limited One Year Warranty

INCLUDES VISOR COLORED SIDE-COVERS AND SCREW PLUG FOR SHIELD USE WITHOUT THE VISOR



#1

FLAT BLACK SOLID



#2



INCLUDES VISOR COLORED SIDE-COVERS AND SCREW PLUG FOR SHIELD USE WITHOUT THE VISOR



AFX DOT/ECE Cam buckle quick release



#4



#3



FUCHSIA SOLID

BLACK SOLID

FLAT BLACK SOLID

PEARL WHITE SOLID

SILVER SOLID

WINE RED SOLID

HI-VIS YELLOW

FROST GRAY SOLID

FUCHSIA SOLID

PART NUMBERS	XS	0104-1363
	S	0104-1364
	M	0104-1365
	L	0104-1366
	XL	0104-1367
	XXL	0104-1368

	XS	0104-1369
	S	0104-1370
	M	0104-1371
	L	0104-1372
	XL	0104-1373
	XXL	0104-1374

	XS	0104-1375
	S	0104-1376
	M	0104-1377
	L	0104-1378
	XL	0104-1379
	XXL	0104-1380

	XS	0104-1381
	S	0104-1382
	M	0104-1383
	L	0104-1384
	XL	0104-1385
	XXL	0104-1386

	XS	0104-1387
	S	0104-1388
	M	0104-1389
	L	0104-1390
	XL	0104-1391
	XXL	0104-1392

	XS	0104-1393
	S	0104-1394
	M	0104-1395
	L	0104-1396
	XL	0104-1397
	XXL	0104-1398

	XS	0104-1399
	S	0104-1400
	M	0104-1401
	L	0104-1402
	XL	0104-1403
	XXL	0104-1404

	XS	0104-1565
	S	0104-1566
	M	0104-1567
	L	0104-1568
	XL	0104-1569
	XXL	N/A



**BLACK
SOLID**



**SILVER
SOLID**



**FROST GRAY
SOLID**



**HI-VIS
YELLOW**



**PEARL WHITE
SOLID**



**WINE RED
SOLID**

FX-43

ADULT OPEN-FACE

SAFETY CERTIFICATIONS

This helmet model meets or exceeds both ECE 22.05 and DOT FMVSS-218 motorcycle helmet safety standards.

HELMET WEIGHT

A large FX-43 helmet weighs 1.31 kg or 2.89 lbs.

SPECIFICATIONS & FEATURES

- An aerodynamic shell design constructed using an advanced lightweight composite poly-alloy
- A helmet liner and cheek pads made with a hypo-allergenic and anti-microbial nylon, all of which are removable and washable
- A flush-fit, side-coverless face shield that is optically correct, compound-curved, scratch-resistant and protects against UV-rays
- There are several tinted shields available for this model
- 4 points of ventilation with forehead, back and rear vents
- A square type D-ring with chin strap holder
- Provides ample ear cavity space for speakers
- A clear coat finish to protect paint & graphics
- Comes with a Limited One Year Warranty



**NEW
2015**

**FROST GRAY
SOLID**



**NEW
2015**

**HI-VIS YELLOW
SOLID**



**NEW
2015**

**LIPSTICK
SOLID**



**PEARL WHITE
SOLID**

BLACK SOLID

XS 0104-0520
S 0104-0521
M 0104-0522
L 0104-0523
XL 0104-0524
XXL 0104-0525

FLAT BLACK SOLID

XS 0104-0526
S 0104-0527
M 0104-0528
L 0104-0529
XL 0104-0530
XXL 0104-0531

SILVER SOLID

XS 0104-0532
S 0104-0533
M 0104-0534
L 0104-0535
XL 0104-0536
XXL 0104-0537

WINE RED SOLID

XS 0104-0538
S 0104-0539
M 0104-0540
L 0104-0541
XL 0104-0542
XXL 0104-0543

PEARL WHITE SOLID

XS 0104-0544
S 0104-0545
M 0104-0546
L 0104-0547
XL 0104-0548
XXL 0104-0549

PINK SOLID

XS 0104-0550
S 0104-0551
M 0104-0552
L 0104-0553
XL 0104-0554
XXL 0104-0555

FROST GRAY SOLID

XS 0104-1654
S 0104-1655
M 0104-1656
L 0104-1657
XL 0104-1658
XXL 0104-1659

HI-VIS YELLOW SOLID

XS 0104-1660
S 0104-1661
M 0104-1662
L 0104-1663
XL 0104-1664
XXL 0104-1665



**BLACK
SOLID**



**FLAT BLACK
SOLID**



**WINE RED
SOLID**



**PINK
SOLID**



**SILVER
SOLID**

**LIPSTICK
SOLID**

- XS** 0104-1666
- S** 0104-1667
- M** 0104-1668
- L** 0104-1669
- XL** 0104-1670
- XXL** N/A

FX-42A PILOT

ADULT OPEN-FACE

SAFETY CERTIFICATIONS

This helmet model meets or exceeds both ECE 22.05 and DOT FMVSS-218 motorcycle helmet safety standards.

HELMET WEIGHT

A large-size FX-42A helmet weighs 1.05 kg or 2.31 lbs.

SPECIFICATIONS & FEATURES

- An aerodynamic shell design constructed using an advanced lightweight composite poly-alloy
- A helmet liner and cheek pads made with a hypo-allergenic and anti-microbial nylon
- A flush-fit, quick-release, single-turn screw face shield with side covers. The shield itself is optically correct, compound-curved, scratch-resistant and protects against UV-rays
- A square type D-ring with chin strap holder
- A clear coat finish to protect paint & graphics
- Comes with a Limited One Year Warranty



FLAT BLACK
URBAN
CAMO



FLAT PINK
CAMO



FROST GRAY
SOLID

NEW
2015



HI-VIS YELLOW
SOLID

NEW
2015



LIPSTICK
SOLID

NEW
2015



PEARL WHITE
SOLID



SILVER
SOLID



FLAT RED
SOLID

FLAT BLACK
SOLID

BLACK
SOLID

SILVER
SOLID

GUNMETAL
SOLID

PEARL WHITE
SOLID

FLAT BLUE
SOLID

FLAT RED
SOLID

PART NUMBERS	XS	0103-0509
	S	0103-0510
	M	0103-0511
	L	0103-0512
	XL	0103-0513
	XXL	0103-0514

XS	0103-0515
S	0103-0516
M	0103-0517
L	0103-0518
XL	0103-0519
XXL	0103-0520

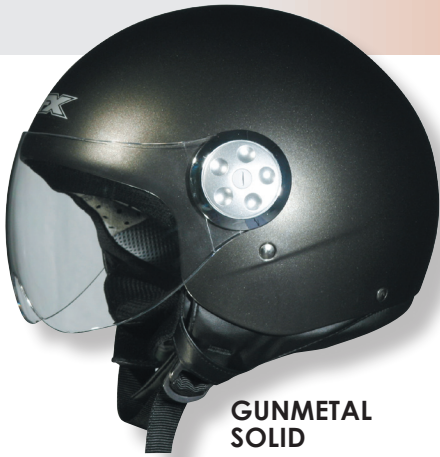
XS	0103-0521
S	0103-0522
M	0103-0523
L	0103-0524
XL	0103-0525
XXL	0103-0526

XS	0103-0527
S	0103-0528
M	0103-0529
L	0103-0530
XL	0103-0531
XXL	0103-0532

XS	0103-0533
S	0103-0534
M	0103-0535
L	0103-0536
XL	0103-0537
XXL	0103-0538

XS	0103-0539
S	0103-0540
M	0103-0541
L	0103-0542
XL	0103-0543
XXL	0103-0544

XS	0103-0545
S	0103-0546
M	0103-0547
L	0103-0548
XL	0103-0549
XXL	0103-0550



**GUNMETAL
SOLID**



**BLACK
SOLID**



**FLAT PINK
VINE**



**FLAT BLACK
SOLID**



**FLAT WHITE
VINE**



**FLAT BLUE
SOLID**



**FLAT BLACK
URBAN CAMO**

XS 0103-0551
S 0103-0552
M 0103-0553
L 0103-0554
XL 0103-0555
XXL 0103-0556

**FLAT PINK
CAMO**

XS 0103-0557
S 0103-0558
M 0103-0559
L 0103-0560
XL 0103-0561
XXL 0103-0562

**FLAT WHITE
VINE**

XS 0103-0563
S 0103-0564
M 0103-0565
L 0103-0566
XL 0103-0567
XXL 0103-0568

**FLAT PINK
VINE**

XS 0103-0569
S 0103-0570
M 0103-0571
L 0103-0572
XL 0103-0573
XXL 0103-0574

**FROST GRAY
SOLID**

XS 0103-1088
S 0103-1089
M 0103-1090
L 0103-1091
XL 0103-1092
XXL 0103-1093

**HI-VIS YELLOW
SOLID**

XS 0103-1094
S 0103-1095
M 0103-1096
L 0103-1097
XL 0103-1098
XXL 0103-1099

**LIPSTICK
SOLID**

XS 0103-1100
S 0103-1101
M 0103-1102
L 0103-1103
XL 0103-1104
XXL N/A

PART NUMBERS

FX-75

ADULT OPEN-FACE

SAFETY CERTIFICATIONS

This helmet model meets or exceeds DOT FM-VSS-218 motorcycle helmet safety standards

HELMET WEIGHT

A large FX-75 helmet weighs 1.2 kg or 2.65 lbs.

SPECIFICATIONS & FEATURES

- An advanced aerodynamic shell design constructed using thermoplastic poly-alloy
- A helmet liner and cheek pads made with a hypo-allergenic and anti-microbial nylon
- A removable snap-on visor
- Forehead ventilation
- A square type D-ring with chin strap holder
- Provides ample ear cavity space for speakers
- A clear coat finish to protect paint & graphics
- Comes with a Limited One Year Warranty



CAMO



FLAT BLACK SOLID



SILVER SOLID



BLACK SOLID



WINE RED SOLID



WHITE SOLID

BLACK SOLID

XS	0104-0071
S	0104-0072
M	0104-0073
L	0104-0074
XL	0104-0075
XXL	0104-0076

SILVER SOLID

XS	0104-0077
S	0104-0078
M	0104-0079
L	0104-0080
XL	0104-0081
XXL	0104-0082

FLAT BLACK SOLID

XS	0104-0083
S	0104-0084
M	0104-0085
L	0104-0086
XL	0104-0087
XXL	0104-0088

WINE RED SOLID

XS	0104-0089
S	0104-0090
M	0104-0091
L	0104-0092
XL	0104-0093
XXL	0104-0094

WHITE SOLID

XS	0104-0095
S	0104-0096
M	0104-0097
L	0104-0098
XL	0104-0099
XXL	0104-0100

CAMO

XS	0104-0101
S	0104-0102
M	0104-0103
L	0104-0104
XL	0104-0105
XXL	0104-0106

FX-75Y

YOUTH OPEN-FACE

SAFETY CERTIFICATIONS

This helmet model meets or exceeds DOT FM-VSS-218 motorcycle helmet safety standards

HELMET WEIGHT

A youth large FX-75Y helmet weighs 1.2 kg or 2.65 lbs.

SPECIFICATIONS & FEATURES

- An advanced aerodynamic shell design constructed using thermoplastic poly-alloy
- A helmet liner and cheek pads made with a hypo-allergenic and anti-microbial nylon
- A removable snap-on visor
- Forehead ventilation
- A square type D-ring with chin strap holder
- Provides ample ear cavity space for speakers
- A clear coat finish to protect paint & graphics
- Comes with a Limited One Year Warranty



FLAT BLACK
SOLID



CAMO



BLACK
SOLID



SILVER
SOLID



WINE RED
SOLID



WHITE
SOLID

PART NUMBERS

BLACK SOLID

YS 0105-0001
YM 0105-0003
YL 0105-0004

SILVER SOLID

YS 0105-0005
YM 0105-0006
YL 0105-0007

FLAT BLACK SOLID

YS 0105-0008
YM 0105-0009
YL 0105-0010

WINE RED SOLID

YS 0105-0011
YM 0105-0012
YL 0105-0013

WHITE SOLID

YS 0105-0014
YM 0105-0015
YL 0105-0016

CAMO

YS 0105-0017
YM 0105-0018
YL 0105-0019

FX-76 VINTAGE MULTI

ADULT OPEN-FACE

SAFETY CERTIFICATIONS

This helmet model meets or exceeds both ECE 22.05 and DOT FMVSS-218 motorcycle helmet safety standards. Note helmet sizing 3XL AND 4XL is DOT approved only.

HELMET WEIGHT

A x-small weighs 0.8 kg or 1.76 lbs.

A x-large weighs 1.0 kg or 2.2 lbs.

A xxx-large weighs 1.1 kg or 2.40 lbs.

SPECIFICATIONS & FEATURES

- An aerodynamic shell design constructed using advanced fiberglass reinforced plastic (FRP) for light weight and strength.
- A quilted helmet liner and cheek pads made with hypo-allergenic and anti-microbial nylon / leather
- 3 snap shield/visor attachment but NO VISOR INCLUDED WITH HELMET
- No front AFX logo, only small AFX back logo
- A square type D-ring with chin strap holder
- Provides ample ear cavity space for speakers
- A clear coat finish to protect paint & graphics
- Chrome trim around eye port, except NO CHROME TRIM ON FLAT BLACK SOLID
- Comes with a Limited One Year Warranty



LINE GRAPHIC GOLD FLAKE W/
CHROME TRIM



LINER



LINE GRAPHIC WHITE METAL W/
CHROME TRIM



LINE GRAPHIC ORANGE FLAKE W/
CHROME TRIM

LINE GRAPHIC WHITE METAL W/ CHROME TRIM

XS	0104-1165
S	0104-1166
M	0104-1167
L	0104-1168
XL	0104-1169
XXL	0104-1170
3XL	N/A
4XL	N/A

LINE GRAPHIC ORANGE FLAKE W/ CHROME TRIM

XS	0104-1177
S	0104-1178
M	0104-1179
L	0104-1180
XL	0104-1181
XXL	0104-1182
3XL	N/A
4XL	N/A

LINE GRAPHIC GOLD FLAKE W/ CHROME TRIM

XS	0104-1171
S	0104-1172
M	0104-1173
L	0104-1174
XL	0104-1175
XXL	0104-1176
3XL	N/A
4XL	N/A

PART NUMBERS



ROUTE 66 FLAT BLACK W/
CHROME TRIM



MCQ GRAPHIC PEARL WHITE W/
CHROME TRIM



MCQ GRAPHIC GLOSS BLACK W/
CHROME TRIM

ROUTE 66
FLAT BLACK W/
CHROME TRIM

XS	0104-1145
S	0104-1146
M	0104-1147
L	0104-1148
XL	0104-1149
XXL	0104-1150
3XL	0104-1151
4XL	0104-1152

MCQ GRAPHIC
GLOSS BLACK W/
CHROME TRIM

XS	0104-1153
S	0104-1154
M	0104-1155
L	0104-1156
XL	0104-1157
XXL	0104-1158
3XL	N/A
4XL	N/A

MCQ GRAPHIC
PEARL WHITE W/
CHROME TRIM

XS	0104-1159
S	0104-1160
M	0104-1161
L	0104-1162
XL	0104-1163
XXL	0104-1164
3XL	N/A
4XL	N/A

PART NUMBERS

FX-76 VINTAGE SOLID & METAL FLAKE

ADULT OPEN-FACE

SAFETY CERTIFICATIONS

This helmet model meets or exceeds both ECE 22.05 and DOT FMVSS-218 motorcycle helmet safety standards. Note helmet sizing 3XL AND 4XL is DOT approved only.

HELMET WEIGHT

A x-small weighs 0.8 kg or 1.76 lbs.

A x-large weighs 1.0 kg or 2.2 lbs.

A xxxx-large weighs 1.1 kg or 2.40 lbs.

SPECIFICATIONS & FEATURES

- An aerodynamic shell design constructed using advanced fiberglass reinforced plastic (FRP) for light weight and strength.
- A quilted helmet liner and cheek pads made with hypo-allergenic and anti-microbial nylon / leather
- 3 snap shield/visor attachment but NO VISOR INCLUDED WITH HELMET
- No front AFX logo, only small AFX back logo
- A square type D-ring with chin strap holder
- Provides ample ear cavity space for speakers
- A clear coat finish to protect paint & graphics
- Chrome trim around eye port, except NO CHROME TRIM ON FLAT BLACK SOLID
- Comes with a Limited One Year Warranty



SILVER METAL FLAKE SOLID



LINER



BLACK METAL FLAKE SOLID



FUCHSIA SOLID



CANDY APPLE RED SOLID

**NEW
2015**



GOLD METAL FLAKE SOLID



FROST GRAY SOLID



FLAT BLACK SOLID W/
NO CHROME TRIM



GLOSS BLACK SOLID W/
CHROME TRIM

FUCHSIA SOLID

FROST GRAY SOLID

BLACK METAL FLAKE

SILVER METAL FLAKE

GOLD METAL FLAKE

GLOSS BLACK SOLID W/
CHROME TRIM

FLAT BLACK SOLID W/
NO CHROME TRIM

CANDY APPLE RED SOLID

PART NUMBERS	FUCHSIA SOLID	FROST GRAY SOLID	BLACK METAL FLAKE	SILVER METAL FLAKE	GOLD METAL FLAKE	GLOSS BLACK SOLID W/ CHROME TRIM	FLAT BLACK SOLID W/ NO CHROME TRIM	CANDY APPLE RED SOLID							
XS	0104-1198	XS	0104-1203	XS	0104-1211	XS	0104-1219	XS	0104-1225	XS	0104-1129	XS	0104-1137	XS	0104-1622
S	0104-1199	S	0104-1204	S	0104-1212	S	0104-1220	S	0104-1226	S	0104-1130	S	0104-1138	S	0104-1623
M	0104-1200	M	0104-1205	M	0104-1213	M	0104-1221	M	0104-1227	M	0104-1131	M	0104-1139	M	0104-1624
L	0104-1201	L	0104-1206	L	0104-1214	L	0104-1222	L	0104-1228	L	0104-1132	L	0104-1140	L	0104-1625
XL	0104-1202	XL	0104-1207	XL	0104-1215	XL	0104-1223	XL	0104-1229	XL	0104-1133	XL	0104-1141	XL	0104-1626
XXL	N/A	XXL	0104-1208	XXL	0104-1216	XXL	0104-1224	XXL	0104-1230	XXL	0104-1134	XXL	0104-1142	XXL	0104-1627
3XL	N/A	3XL	0104-1209	3XL	0104-1217	3XL	N/A	3XL	N/A	3XL	0104-1135	3XL	0104-1143	3XL	0104-1628
4XL	N/A	4XL	0104-1210	4XL	0104-1218	4XL	N/A	4XL	N/A	4XL	0104-1136	4XL	0104-1144	4XL	0104-1629

FX-76 VINTAGE FREEDOM, REBEL, STEALTH ADULT OPEN-FACE



BLACK FREEDOM



WHITE FREEDOM



STEALTH



BLACK REBEL



SAFETY CERTIFICATIONS

This helmet model meets or exceeds both ECE 22.05 and DOT FMVSS-218 motorcycle helmet safety standards. Note helmet sizing 3XL AND 4XL is DOT approved only.

HELMET WEIGHT

A x-small weighs 0.8 kg or 1.76 lbs.

A x-large weighs 1.0 kg or 2.2 lbs.

A xxx-large weighs 1.1 kg or 2.40 lbs.

SPECIFICATIONS & FEATURES

- An aerodynamic shell design constructed using advanced fiberglass reinforced plastic (FRP) for light weight and strength.
- A quilted helmet liner and cheek pads made with hypo-allergenic and anti-microbial nylon / leather
- 3 snap shield/visor attachment but NO VISOR INCLUDED WITH HELMET
- No front AFX logo, only small AFX back logo
- A square type D-ring with chin strap holder
- Provides ample ear cavity space for speakers
- A clear coat finish to protect paint & graphics
- Chrome trim around eye port, except NO CHROME TRIM ON FLAT BLACK SOLID
- Comes with a Limited One Year Warranty



LINER

PART NUMBERS	WHITE FREEDOM	BLACK FREEDOM	FLAT BLACK STEALTH	BLACK REBEL
XS	0104-1630	0104-1636	0104-1642	0104-1648
S	0104-1631	0104-1637	0104-1643	0104-1649
M	0104-1632	0104-1638	0104-1644	0104-1650
L	0104-1633	0104-1639	0104-1645	0104-1651
XL	0104-1634	0104-1640	0104-1646	0104-1652
XXL	0104-1635	0104-1641	0104-1647	0104-1653
3XL	N/A	N/A	N/A	N/A
4XL	N/A	N/A	N/A	N/A

FX-200 SLICK SOLID & MULTI

ADULT BEANIE HELMET

SAFETY CERTIFICATIONS

This helmet model meets or exceeds DOT FMVSS-218 motorcycle helmet safety standards

HELMET WEIGHT

A large-size FX-200 Slick helmet weighs 0.75 kg or 1.65 lbs.

SPECIFICATIONS & FEATURES

- An aerodynamic shell design constructed using advanced fiberglass reinforced plastic (FRP) for light weight and strength.
- Removable ear covers
- Helmet liner made with a hypo-allergenic and antimicrobial nylon.
- Comes with a Limited One Year Warranty
- Retention system is D-Ring
- A clear coat finish to protect paint , available in gloss or flat
- **NO FRONT AFX LOGO, SMALL REAR AFX LOGO ABOVE DOT LABELING**

BASED ON THE INNOVATIVE DUAL LENS FX-200 BUT WITH THE SHIELDS , VISOR AND EAR COVERS ELIMINATED FOR EVEN LIGHTER WEIGHT AND SIMPLICITY



BLACK FREEDOM



WHITE FREEDOM



STEALTH



BLACK REBEL



FROST GREY SOLID

	GLOSS BLACK SOLID	FLAT BLACK SOLID	GLOSS BLACK BLADE	FLAT BLACK BLADE	GLOSS BLACK STAR STRIPE	PEARL WHITE STAR STRIPE	FLAT BLACK STAR STRIPE	FLAT WHITE STAR STRIPE	CANDY APPLE RED SOLID
PART NUMBERS	XS 0103-0916 S 0103-0917 M 0103-0918 L 0103-0919 XL 0103-0920 XXL 0103-0921	XS 0103-0922 S 0103-0923 M 0103-0924 L 0103-0925 XL 0103-0926 XXL 0103-0927	XS 0103-0928 S 0103-0929 M 0103-0930 L 0103-0931 XL 0103-0932 XXL 0103-0933	XS 0103-0934 S 0103-0935 M 0103-0936 L 0103-0937 XL 0103-0938 XXL 0103-0939	XS 0103-0940 S 0103-0941 M 0103-0942 L 0103-0943 XL 0103-0944 XXL 0103-0945	XS 0103-0946 S 0103-0947 M 0103-0948 L 0103-0949 XL 0103-0950 XXL 0103-0951	XS 0103-0952 S 0103-0953 M 0103-0954 L 0103-0955 XL 0103-0956 XXL 0103-0957	XS 0103-0958 S 0103-0959 M 0103-0960 L 0103-0961 XL 0103-0962 XXL 0103-0963	XS 0103-0999 S 0103-1000 M 0103-1001 L 0103-1002 XL 0103-1003 XXL 0103-1004
	FROST GRAY SOLID	FUCHSIA SOLID	BLACK METAL FLAKE	GUNMETAL METAL FLAKE	FREEDOM WHITE	FREEDOM BLACK	STEALTH	REBEL BLACK	
PART NUMBERS	XS 0103-1005 S 0103-1006 M 0103-1007 L 0103-1008 XL 0103-1009 XXL 0103-1010	XS 0103-1011 S 0103-1012 M 0103-1013 L 0103-1014 XL 0103-1015 XXL N/A	XS 0103-1016 S 0103-1017 M 0103-1018 L 0103-1019 XL 0103-1020 XXL 0103-1021	XS 0103-1022 S 0103-1023 M 0103-1024 L 0103-1025 XL 0103-1026 XXL 0103-1027	XS 0103-1028 S 0103-1029 M 0103-1030 L 0103-1031 XL 0103-1032 XXL 0103-1033	XS 0103-1034 S 0103-1035 M 0103-1036 L 0103-1037 XL 0103-1038 XXL 0103-1039	XS 0103-1040 S 0103-1041 M 0103-1042 L 0103-1043 XL 0103-1044 XXL 0103-1045	XS 0103-1046 S 0103-1047 M 0103-1048 L 0103-1049 XL 0103-1050 XXL 0103-1051	



BLACK METAL FLAKE



GUNMETAL METAL FLAKE



GLOSS BLACK SOLID



FUCHSIA SOLID



CANDY APPLE RED SOLID



FLAT BLACK SOLID



GLOSS BLACK BLADE



FLAT BLACK BLADE



FLAT BLACK STAR STRIPE



FLAT WHITE STAR STRIPE



PEARL WHITE STAR STRIPE



GLOSS BLACK STAR STRIPE

FX-200 DUAL INNER LENS

ADULT BEANIE HELMET + SHIELDS

SAFETY CERTIFICATIONS

This helmet model meets or exceeds DOT FMVSS-218 motorcycle helmet safety standards

HELMET WEIGHT

A large-size FX-200 helmet weighs 1 kg or 2.2 lbs.

SPECIFICATIONS & FEATURES

- An aerodynamic shell design constructed using advanced fiberglass reinforced plastic (FRP) for light weight and strength.
- Slimline removable visor
- Removable ear covers
- Helmet liner made with a hypo-allergenic and antimicrobial nylon
- Patented dual inner lens design, smoke for daytime use and clear for nighttime use, no need to change shields or ride without eye protection.
- Comes with deluxe cloth carrying bag
- A clear coat finish to protect paint & graphics
- Comes with a Limited One Year Warranty

INCLUDES EAR COVER KIT AND INSTRUCTIONS



**NEW
2015**

BLACK METAL FLAKE



**NEW
2015**

GUNMETAL METAL FLAKE



**NEW
2015**

**CANDY APPLE RED
SOLID**



**NEW
2015**

**FROST GREY
SOLID**



**NEW
2015**

GOLD METAL FLAKE



**NEW
2015**

**FUCHSIA
SOLID**

PART NUMBERS	CANDY APPLE RED SOLID	FROST GRAY SOLID	FUCHSIA SOLID	BLACK METAL FLAKE	GUNMETAL METAL FLAKE	GOLD METAL FLAKE
XS	0103-0964	XS 0103-0970	XS 0103-0976	XS 0103-0981	XS 0103-0987	XS 0103-0993
S	0103-0965	S 0103-0971	S 0103-0977	S 0103-0982	S 0103-0988	S 0103-0994
M	0103-0966	M 0103-0972	M 0103-0978	M 0103-0983	M 0103-0989	M 0103-0995
L	0103-0967	L 0103-0973	L 0103-0979	L 0103-0984	L 0103-0990	L 0103-0996
XL	0103-0968	XL 0103-0974	XL 0103-0980	XL 0103-0985	XL 0103-0991	XL 0103-0997
XXL	0103-0969	XXL 0103-0975	XXL N/A	XXL 0103-0986	XXL 0103-0992	XXL 0103-0998



FLAT BLACK & SILVER / SILVER PIN FLAME



BLACK & SILVER / SILVER PIN FLAME



BLACK & SILVER / PINK PIN FLAME



FLAT BLACK & SILVER / PINK PIN FLAME



BLACK SOLID



LIGHT SILVER SOLID



PEARL WHITE SOLID



FLAT BLACK SOLID



WITH CLEAR AND SMOKE SHIELD UP



WITH SMOKE SHIELD DOWN



WITH CLEAR SHIELD DOWN

BLACK SOLID

FLAT BLACK SOLID

LIGHT SILVER SOLID

PEARL WHITE SOLID

BLACK & SILVER / SILVER PIN FLAME

FLAT BLACK & SILVER / SILVER PIN FLAME

BLACK & SILVER / PINK PIN FLAME

FLAT BLACK & SILVER / PINK PIN FLAME

XS	0103-0727
S	0103-0728
M	0103-0729
L	0103-0730
XL	0103-0731
XXL	0103-0732

XS	0103-0733
S	0103-0734
M	0103-0735
L	0103-0736
XL	0103-0737
XXL	0103-0738

XS	0103-0739
S	0103-0740
M	0103-0741
L	0103-0742
XL	0103-0743
XXL	0103-0744

XS	0103-0745
S	0103-0746
M	0103-0747
L	0103-0748
XL	0103-0749
XXL	0103-0750

XS	0103-0751
S	0103-0752
M	0103-0753
L	0103-0754
XL	0103-0755
XXL	0103-0756

XS	0103-0757
S	0103-0758
M	0103-0759
L	0103-0760
XL	0103-0761
XXL	0103-0762

XS	0103-0763
S	0103-0764
M	0103-0765
L	0103-0766
XL	0103-0767
XXL	0103-0768

XS	0103-0769
S	0103-0770
M	0103-0771
L	0103-0772
XL	0103-0773
XXL	0103-0774

FX-72 INNER LENS

ADULT BEANIE HELMET + SHIELD

SAFETY CERTIFICATIONS

This helmet model meets or exceeds DOT FMVSS-218 motorcycle helmet safety standards

HELMET WEIGHT

A large-size FX-72 helmet weighs 1 kg or 2.2 lbs.

SPECIFICATIONS & FEATURES

- An advanced aerodynamic shell design constructed using thermoplastic poly-alloy
- Helmet comes with clear shield installed and extra smoke shield in the box.
- Removable ear covers
- A square type D-ring with chin strap holder
- A clear coat finish to protect paint & graphics
- A hypo-allergenic and anti-microbial nylon liner
- Comes with a Limited One Year Warranty

INCLUDES EAR COVER KIT AND INSTRUCTIONS



LIGHT SILVER SOLID



WITH CLEAR SHIELD INSTALLED



BLACK SOLID



FLAT BLACK SOLID



PEARL WHITE SOLID



BLACK STEALTH



FLAT BLACK STEALTH

BLACK SOLID

XS	0103-0787
S	0103-0788
M	0103-0789
L	0103-0790
XL	0103-0791
XXL	0103-0792

FLAT BLACK SOLID

XS	0103-0793
S	0103-0794
M	0103-0795
L	0103-0796
XL	0103-0797
XXL	0103-0798

LIGHT SILVER SOLID

XS	0103-0799
S	0103-0800
M	0103-0801
L	0103-0802
XL	0103-0803
XXL	0103-0804

PEARL WHITE SOLID

XS	0103-0805
S	0103-0806
M	0103-0807
L	0103-0808
XL	0103-0809
XXL	0103-0810

BLACK STEALTH

XS	0103-0811
S	0103-0812
M	0103-0813
L	0103-0814
XL	0103-0815
XXL	0103-0816

FLAT BLACK STEALTH

XS	0103-0817
S	0103-0818
M	0103-0819
L	0103-0820
XL	0103-0821
XXL	0103-0822

PART NUMBERS

FX-70

ADULT BEANIE HELMET + 3-SNAP VISOR



PEARL WHITE
FREEDOM



SAFETY CERTIFICATIONS

This helmet model meets or exceeds DOT FMVSS-218 motorcycle helmet safety standards

HELMET WEIGHT

A large-size FX-70 helmet weighs 0.8 kg or 1.76 lbs.

SPECIFICATIONS & FEATURES

- An advanced aerodynamic shell design constructed using thermoplastic poly-alloy
- A removable snap-on visor
- Removable ear covers
- A square type D-ring with chin strap holder
- A clear coat finish to protect paint & graphics
- A hypo-allergenic and anti-microbial nylon liner
- Comes with a Limited One Year Warranty

INCLUDES EAR COVER KIT AND INSTRUCTIONS



BLACK
SOLID



FLAT
BLACK
SOLID



SAFETY ORANGE
SOLID

NEW
2015



BLACK
FREEDOM



SILVER
SOLID



WHITE
SOLID



WOOD CAMO

NEW
2015



BLACK
SKULL



FLAT
BLACK
SKULL



SMOKE
SILVER
CHROME



BLACK
REBEL

PART NUMBERS	BLACK SOLID	FLAT BLACK SOLID	SILVER SOLID	WHITE SOLID	SMOKE SILVER CHROME	BLACK FREEDOM	PEARL WHITE FREEDOM	BLACK REBEL	BLACK SKULL	FLAT BLACK SKULL	SAFETY ORANGE SOLID	WOOD CAMO
XS	0103-0423	0103-0429	0103-0435	0103-0441	0103-0483	0103-0823	0103-0829	0103-0835	0103-0847	0103-0853	0103-1052	0103-1058
S	0103-0424	0103-0430	0103-0436	0103-0442	0103-0484	0103-0824	0103-0830	0103-0836	0103-0848	0103-0854	0103-1053	0103-1059
M	0103-0425	0103-0431	0103-0437	0103-0443	0103-0485	0103-0825	0103-0831	0103-0837	0103-0849	0103-0855	0103-1054	0103-1060
L	0103-0426	0103-0432	0103-0438	0103-0444	0103-0486	0103-0826	0103-0832	0103-0838	0103-0850	0103-0856	0103-1055	0103-1061
XL	0103-0427	0103-0433	0103-0439	0103-0445	0103-0487	0103-0827	0103-0833	0103-0839	0103-0851	0103-0857	0103-1056	0103-1062
XXL	0103-0428	0103-0434	0103-0440	0103-0446	0103-0488	0103-0828	0103-0834	0103-0840	0103-0852	0103-0858	0103-1057	0103-1063

FX-88

**NEW
2015**

ADULT HALF HELMET

SAFETY CERTIFICATIONS

This helmet model meets or exceeds DOT FMVSS-218 motorcycle helmet safety standards.

HELMET WEIGHT

A large size FX-88 helmet weighs 0.8 kg or 1.76 lbs.

SPECIFICATIONS & FEATURES

- An historically inspired shell design constructed using an advanced thermoplastic poly-alloy
- A square type D-ring with chin strap holder
- A clear coat finish to protect paint
- A hypo-allergenic and anti-microbial nylon liner
- Comes with a Limited One Year Warranty



**FLAT OLIVE DRAB
SOLID**



**FLAT BLACK
SOLID**



**FROST GREY
SOLID**



**GLOSS BLACK
SOLID**

FLAT BLACK SOLID

XS	0103-1064
S	0103-1065
M	0103-1066
L	0103-1067
XL	0103-1068
XXL	0103-1069

GLOSS BLACK SOLID

XS	0103-1070
S	0103-1071
M	0103-1072
L	0103-1073
XL	0103-1074
XXL	0103-1075

FROST GRAY SOLID

XS	0103-1076
S	0103-1077
M	0103-1078
L	0103-1079
XL	0103-1080
XXL	0103-1081

FLAT OLIVE DRAB SOLID

XS	0103-1082
S	0103-1083
M	0103-1084
L	0103-1085
XL	0103-1086
XXL	0103-1087

VITANGE SHIELDS & HELMET BAG

AFX VINTAGE 3-SNAP FLIP SHIELD

SPECIFICATIONS & FEATURES

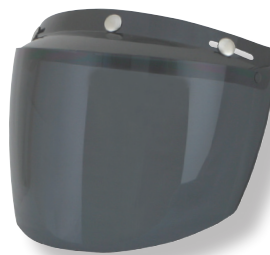
- UNIVERSAL 3-SNAP MOUNTING
- HARD COATED FOR DURABILITY
- OPTICALLY CORRECT UV TREATED



HELMET IS NOT INCLUDED



CLEAR
PART NUMBER :0131-0075



DARK SMOKE (SMOKE)
PART NUMBER :0131-0076



YELLOW SOLID
PART NUMBER :0131-0077



BLUE SOLID
PART NUMBER :0131-0078



SMOKE GRADIENT
PART NUMBER :0131-0079



SILVER MIRROR
PART NUMBER :0131-0080



GOLD MIRROR
PART NUMBER :0131-0081

AFX VINTAGE 5-SNAP FLAT SHIELD

SPECIFICATIONS & FEATURES

- UNIVERSAL 5-SNAP MOUNTING
- HARD COATED FOR DURABILITY
- OPTICALLY CORRECT UV TREATED



CLEAR
PART NUMBER :0131-0072



DARK SMOKE (SMOKE)
PART NUMBER :0131-0073



YELLOW SOLID
PART NUMBER :0131-0074

AFX HELMET BAG



SPECIFICATIONS & FEATURES

- Rip Stop Cordura Nylon
 - Plush Anti Scratch Micro Fiber Lining
 - Heavy Duty Carrying Handle
- AFX HELMET BAG**
PART NUMBER :3514-0016

- Two Way Self Healing Coil Zipper
- Inside Storage Pocket
- Anti Slip Waterproof Bottom

- 4 Moisture Vents
- Size 14x12x10 Inches

HELMET SHIELDS & RATCHET KITS

FOR FX-120



OUTER SHIELD



INNER SHIELD



SHIELD RATCHET KIT

DESCRIPTION

Shield Anti-Scratch (outer)

Shield Anti-Scratch (inner)

FACE SHIELD RATCHET KIT

COLOR

CLEAR
SMOKE
SILVER MIRROR
BLUE MIRROR

SMOKE
SILVER MIRROR

PART NUMBER

0130-0488
0130-0489
0130-0490
0130-0491

0130-0492
0130-0493

0133-0698

FOR FX-95



OUTER SHIELD



SHIELD RATCHET KIT

DESCRIPTION

Shield Anti-Scratch

FACE SHIELD RATCHET KIT

COLOR

CLEAR
SMOKE
DARK SMOKE
SILVER MIRROR
BLUE MIRROR
GOLD MIRROR

PART NUMBER

0130-0233
0130-0234
0130-0235
0130-0236
0130-0237
0130-0238

0133-0335

FOR FX-90, 100 AND MAGNUS



OUTER SHIELD



SHIELD RATCHET KIT

DESCRIPTION

Shield Anti-Scratch

FACE SHIELD RATCHET KIT

COLOR

CLEAR
SMOKE
SILVER MIRROR

PART NUMBER

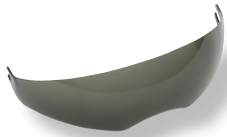
0130-0288
0130-0289
0130-0290

0133-0386

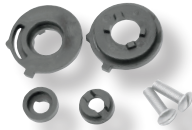
FOR FX-140



OUTER SHIELD



INNER SHIELD



SHIELD RATCHET KIT

DESCRIPTION

Shield Anti-Scratch (outer)

COLOR

CLEAR
SMOKE
SILVER MIRROR
BLUE MIRROR

PART NUMBER

0130-0432
0130-0433
0130-0434
0130-0435

Shield Anti-Scratch (inner)

SMOKE
SILVER MIRROR
AMBER

0130-0436
0130-0437
0130-0438

Shield Anti-Scratch & Anti-Fog (inner)

SMOKE
SILVER MIRROR
AMBER

0130-0439
0130-0440
0130-0441

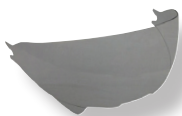
FACE SHIELD RATCHET KIT

0133-0643

FOR FX-41DS



OUTER SHIELD



INNER SHIELD



SHIELD RATCHET KIT

DESCRIPTION

Shield Anti-Scratch (outer)

COLOR

CLEAR
SMOKE
DARK SMOKE
SILVER MIRROR
GOLD MIRROR

PART NUMBER

0130-0501
0130-0502
0130-0503
0130-0504
0130-0505

Shield Anti-Scratch (inner)

DARK SMOKE
SMOKE

0130-0506
0130-0507

FACE SHIELD RATCHET KIT

0133-0752

FOR FX-39DS



OUTER SHIELD



OPTIONAL OUTER SUN SHIELD



SHIELD RATCHET KIT

DESCRIPTION

Shield Anti-Scratch

COLOR

CLEAR
SMOKE
DARK SMOKE
SILVER MIRROR

PART NUMBER

0130-0400
0130-0401
0130-0402
0130-0403

Optional outer sun shield

Please see page 32
for more information

SMOKE
DARK SMOKE
SILVER MIRROR
GOLD MIRROR

0130-0442
0130-0443
0130-0444
0130-0445

FACE SHIELD RATCHET KIT

0133-0602

HELMET SHIELDS & RATCHET KITS

FOR FX-55



OUTER SHIELD



INNER SHIELD



SHIELD RATCHET KIT

DESCRIPTION

Shield Anti-Scratch

COLOR

CLEAR
SMOKE
DARK SMOKE
SILVER MIRROR
GOLD MIRROR

PART NUMBER

0130-0508
0130-0509
0130-0510
0130-0511
0130-0512

FACE SHIELD RATCHET KIT

0133-0753

FOR FX-50



OUTER SHIELD



INNER SHIELD



SHIELD RATCHET KIT

DESCRIPTION

Shield Anti-Scratch (outer)

COLOR

CLEAR
SMOKE
DARK SMOKE
SILVER MIRROR

PART NUMBER

0130-0395
0130-0396
0130-0397
0130-0398

Shield Anti-Scratch (inner)

SMOKE

0130-0399

FACE SHIELD RATCHET KIT

0133-0578

FOR FX-43



OUTER SHIELD



SHIELD RATCHET KIT

DESCRIPTION

Shield Anti-Scratch

COLOR

CLEAR
SMOKE
DARK SMOKE
SILVER MIRROR
BLUE MIRROR
GOLD MIRROR
PURPLE MIRROR

PART NUMBER

0130-0249
0130-0250
0130-0251
0130-0252
0130-0253
0130-0254
0130-0255

FACE SHIELD RATCHET KIT

0133-0339

FOR FX-42 PILOT



OUTER SHIELD



SHIELD RATCHET KIT

DESCRIPTION

Shield Anti-Scratch

COLOR

CLEAR
SMOKE
DARK SMOKE
SILVER MIRROR

PART NUMBER

0130-0291
0130-0292
0130-0293
0130-0294

FACE SHIELD RATCHET KIT

0133-0387

FOR FX-200



INNER SHIELD

DESCRIPTION

Shield Anti-Scratch (inner)

COLOR

CLEAR
SMOKE

PART NUMBER

0130-0419
0130-0420

FOR FX-72



INNER SHIELD

DESCRIPTION

Shield Anti-Scratch

COLOR

CLEAR
SMOKE

PART NUMBER

0130-0404
0130-0405

FX-39DS SNOW HELMET

ADULT DUAL SPORT

SAFETY CERTIFICATIONS

This helmet model meets or exceeds both ECE 22.05 and DOT FMVSS-218 motorcycle helmet safety standards. Note FX-39DS big head sizing 3XL/4XL is DOT approved only.

HELMET WEIGHT

A large-size FX-39DS weighs 1.59 kg or 3.5 lbs

SPECIFICATIONS & FEATURES

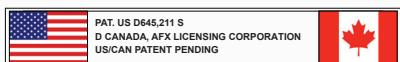
- CHIN BAR MOUNTED EXTREME SNOW BREATH GUARD
 - An aerodynamic shell design constructed using an advanced lightweight composite poly-alloy
 - A flip-up, flush-fit, quick-release, single-turn screw face shield. **AFX DESIGNED * AMPD™ FRAMELESS DOUBLE LENS SNOW FACE SHIELD** that is optically correct, compound-curved, scratch-resistant and protects against UV-rays
 - Shield can be removed to allow open face riding or goggle use
 - A helmet liner and cheek pads made with a hypo-allergenic and anti-microbial nylon, all of which are removable and washable
 - 9 points of ventilation with chin, side, forehead, top and rear vents
 - Retention system is quick release with sewn on ECE logo
 - Provides ample ear cavity space for speakers
 - A clear coat finish to protect paint & graphics
 - Comes with a Limited One Year Warranty
- INCLUDES DOUBLE LENS SHIELD AND EXTREME SNOW BREATH GUARD**



GLOSS BLACK WITH DOUBLE LENS SHIELD



FROST GRAY WITH DOUBLE LENS SHIELD



INCLUDES FLAT BLACK SIDE-COVERS AND SCREW PLUG FOR SHIELD USE WITHOUT THE VISOR



INCLUDES EXTREME SNOW BREATH GUARD



AFX DOT/ECE Cam buckle quick release

GLOSS BLACK WITH DOUBLE LENS SHIELD

FROST GRAY WITH DOUBLE LENS SHIELD

PART NUMBERS	XS	N/A
	S	0121-0535
	M	0121-0536
	L	0121-0537
	XL	0121-0538
	XXL	0121-0539
	3XL	0121-0540
	4XL	0121-0541

PART NUMBERS	XS	N/A
	S	0121-0542
	M	0121-0543
	L	0121-0544
	XL	0121-0545
	XXL	0121-0546
	3XL	0121-0547
	4XL	0121-0548

**NEW
2015**

FX-90 SNOW DANGER

ADULT FULL-FACE



**RED MULTI WITH
D/L ELECTRIC SHIELD**

SAFETY CERTIFICATIONS

This helmet model meets or exceeds both ECE 22.05 and DOT FMVSS-218 motorcycle helmet safety standards.

HELMET WEIGHT

A large-size FX-90 weighs 1.36 kg or 3.00 lbs.

SPECIFICATIONS & FEATURES

- CHIN BAR MOUNTED HIGH FLOW BREATH GUARD WITH VENT INSERTS
 - An aerodynamic shell design constructed using an advanced lightweight composite poly-alloy
 - A helmet liner and cheek pads made with a hypo-allergenic and anti-microbial nylon, all of which are removable and washable
 - Provides ample ear cavity space for speakers
 - A flush-fit, side-coverless **AFX DESIGNED** **AMPD™** FRAMELESS DOUBLE LENS SNOW FACE SHIELD that is optically correct, compound-curved, scratch-resistant and protects against UV-rays
 - 9 points of ventilation with chin, side, rear & forehead vents
 - A square type D-ring with chin strap holder
 - A clear coat finish to protect paint & graphics
 - Comes with a cloth carrying bag
 - Comes with a Limited Lifetime Warranty
 - Use same outer shields as the FX-90 snow helmet and FX-MAGNUS snow helmet
- INCLUDES DOUBLE LENS SHIELD OR D/L ELECTRIC SHIELD, BREATH GUARD AND CHIN CURTAIN**



**SILVER MULTI
D/L ELECTRIC SHIELD**

**GREEN MULTI
D/L ELECTRIC SHIELD**



**INCLUDES BREATH GUARD AND
CHIN CURTAIN**



**BLUE MULTI
D/L ELECTRIC SHIELD**

SILVER MULTI WITH
D/L ELECTRIC SHIELD

BLUE MULTI WITH
D/L ELECTRIC SHIELD

RED MULTI WITH
D/L ELECTRIC SHIELD

GREEN MULTI WITH
D/L ELECTRIC SHIELD

PART NUMBERS

XS	N/A
S	N/A
M	0121-0549
L	0121-0550
XL	0121-0551
XXL	0121-0552

XS	N/A
S	N/A
M	0121-0553
L	0121-0554
XL	0121-0555
XXL	0121-0556

XS	N/A
S	N/A
M	0121-0557
L	0121-0558
XL	0121-0559
XXL	0121-0560

XS	N/A
S	N/A
M	0121-0561
L	0121-0562
XL	0121-0563
XXL	0121-0564

FX-90 SNOW HELMET SOLID AND MULTI

ADULT FULL-FACE

SAFETY CERTIFICATIONS

This helmet model meets or exceeds both ECE 22.05 and DOT FMVSS-218 motorcycle helmet safety standards.

HELMET WEIGHT

A large-size FX-90 weighs 1.36 kg or 3.00 lbs.

SPECIFICATIONS & FEATURES

- CHIN BAR MOUNTED HIGH FLOW BREATH GUARD WITH VENT INSERTS
 - An aerodynamic shell design constructed using an advanced lightweight composite poly-alloy
 - A helmet liner and cheek pads made with a hypo-allergenic and anti-microbial nylon, all of which are removable and washable
 - Provides ample ear cavity space for speakers
 - A flush-fit, side-coverless AFX DESIGNED * AMPD™ FRAMELESS DOUBLE LENS SNOW FACE SHIELD that is optically correct, compound-curved, scratch-resistant and protects against UV-rays
 - There are optional tinted shields available for this model
 - 7 points of ventilation with chin, side, rear & forehead vents
 - A square type D-ring with red tab and sewn on ECE logo
 - A clear coat finish to protect paint & graphics
 - Comes with a Limited One Year Warranty
 - Use same outer shields as the FX-100 snow helmet and FX-MAGNUS snow helmet
- INCLUDES DOUBLE LENS SHIELD OR D/L ELECTRIC SHIELD, BREATH GUARD AND CHIN CURTAIN**



FLAT BLACK WITH D/L ELECTRIC SHIELD



BLACK WITH D/L ELECTRIC SHIELD



SAFETY ORANGE WITH D/L ELECTRIC SHIELD



INCLUDES BREATH GUARD AND CHIN CURTAIN

BLACK WITH D/L ELECTRIC SHIELD

PART NUMBERS	XS	0121-0420
	S	0121-0421
	M	0121-0422
	L	0121-0423
	XL	0121-0424
	XXL	0121-0425

FLAT BLACK WITH D/L ELECTRIC SHIELD

XS	N/A
S	0121-0502
M	0121-0503
L	0121-0504
XL	0121-0505
XXL	0121-0506

SAFETY ORANGE WITH D/L ELECTRIC SHIELD

XS	N/A
S	0121-0507
M	0121-0508
L	0121-0509
XL	0121-0510
XXL	0121-0511



BLACK WITH D/L SHIELD



SILVER MULTI WITH D/L SHIELD



FLAT BLACK MULTI WITH D/L SHIELD



SAFETY ORANGE WITH D/L SHIELD



BLACK MULTI WITH D/L SHIELD



GREEN MULTI WITH D/L SHIELD



FLAT BLACK WITH D/L SHIELD



SAFETY ORANGE MULTI WITH D/L SHIELD



BLUE MULTI WITH D/L SHIELD



RED MULTI WITH D/L SHIELD



YELLOW MULTI WITH D/L SHIELD

FLAT BLACK MULTI WITH D/L SHIELD

XS	N/A
S	N/A
M	0121-0483
L	0121-0484
XL	0121-0485
XXL	0121-0486

SILVER MULTI WITH D/L SHIELD

XS	N/A
S	0121-0487
M	0121-0488
L	0121-0489
XL	0121-0490
XXL	0121-0491

GREEN MULTI WITH D/L SHIELD

XS	N/A
S	N/A
M	0121-0493
L	0121-0494
XL	0121-0495
XXL	0121-0496

YELLOW MULTI WITH D/L SHIELD

XS	N/A
S	0121-0497
M	0121-0498
L	0121-0499
XL	0121-0500
XXL	0121-0501

BLACK WITH D/L SHIELD

XS	0121-0372
S	0121-0373
M	0121-0374
L	0121-0375
XL	0121-0376
XXL	0121-0377

FLAT BLACK WITH D/L SHIELD

XS	N/A
S	0121-0462
M	0121-0463
L	0121-0464
XL	0121-0465
XXL	0121-0466

SAFETY ORANGE WITH D/L SHIELD

XS	N/A
S	0121-0467
M	0121-0468
L	0121-0469
XL	0121-0470
XXL	0121-0471

RED MULTI WITH D/L SHIELD

XS	N/A
S	N/A
M	0121-0448
L	0121-0449
XL	0121-0450
XXL	0121-0451

BLUE MULTI WITH D/L SHIELD

XS	N/A
S	0121-0452
M	0121-0453
L	0121-0454
XL	0121-0455
XXL	0121-0456

SAFETY ORANGE MULTI D/L SHIELD

XS	N/A
S	N/A
M	0121-0473
L	0121-0474
XL	0121-0475
XXL	0121-0476

BLACK MULTI WITH D/L SHIELD

XS	N/A
S	N/A
M	0121-0478
L	0121-0479
XL	0121-0480
XXL	0121-0481

PART NUMBERS

FX-MAGNUS SNOW 3XL&4XL

ADULT FULL-FACE

SAFETY CERTIFICATIONS

This helmet model meets or exceeds both ECE 22.05 and DOT FMVSS-218 motorcycle helmet safety standards.

HELMET WEIGHT

A large-size FX-MAGNUS weighs 1.65 kg or 3.60 lbs.

SPECIFICATIONS & FEATURES

- CHIN BAR MOUNTED HIGH FLOW BREATH GUARD WITH VENT INSERTS
 - An aerodynamic shell design constructed using an advanced lightweight composite poly-alloy
 - A helmet liner and cheek pads made with a hypo-allergenic and anti-microbial nylon, all of which are removable and washable
 - Provides ample ear cavity space for speakers
 - A flush-fit, side-coverless AFX DESIGNED **AMPD™** FRAMELESS DOUBLE LENS SNOW FACE SHIELD that is optically correct, compound-curved, scratch-resistant and protects against UV-rays
 - There are optional tinted shields available for this model
 - 7 points of ventilation with chin, side, rear & forehead vents
 - A square type D-ring with red tab and sewn on ECE logo
 - A clear coat finish to protect paint & graphics
 - Comes with a Limited One Year Warranty
 - Use same outer shields as the FX-100 snow helmet and FX-90 snow helmet
- INCLUDES DOUBLE LENS SHIELD OR D/L ELECTRIC SHIELD, BREATH GUARD AND CHIN CURTAIN**



INCLUDES BREATH GUARD AND CHIN CURTAIN



GLOSS BLACK WITH D/L ELECTRIC SHIELD



GLOSS BLACK WITH D/L SHIELD



SAFETY ORANGE WITH D/L ELECTRIC SHIELD



SAFETY ORANGE WITH D/L SHIELD



FLAT BLACK WITH D/L ELECTRIC SHIELD



FLAT BLACK WITH D/L SHIELD

SAFETY ORANGE WITH DOUBLE LENS SHIELD

3XL 0121-0529
4XL 0121-0530

SAFETY ORANGE WITH D/L ELECTRIC SHIELD

3XL 0121-0533
4XL 0121-0534

GLOSS BLACK WITH DOUBLE LENS SHIELD

3XL 0121-0428
4XL 0121-0429

GLOSS BLACK WITH D/L ELECTRIC SHIELD

3XL 0121-0426
4XL 0121-0427

FLAT BLACK WITH DOUBLE LENS SHIELD

3XL 0121-0527
4XL 0121-0528

FLAT BLACK WITH D/L ELECTRIC SHIELD

3XL 0121-0531
4XL 0121-0532

SNOW SHIELDS

FOR FX-90 & FX-100 / MAGNUS



**FX-90 /100, MAGNUS
 AMPD DOUBLE LENS SNOW
 SHIELD
 PART NUMBER :0130-0354**



**FX-90 /100, MAGNUS
 AMPD ELECTRIC DOUBLE
 LENS SNOW SHIELD
 PART NUMBER :0130-0355**

FOR FX-39DS



**FX-39DS AMPD DOUBLE
 LENS SNOW SHIELD
 PART NUMBER :0130-0459**



**FX-39DS AMPD ELECTRIC
 DOUBLE LENS SNOW SHIELD
 PART NUMBER :0130-0460**

FOR FX-120



**FX-120 AMPD DOUBLE LENS
 SNOW SHIELD
 PART NUMBER :0130-0494**



**FX-120 AMPD ELECTRIC
 DOUBLE LENS SNOW SHIELD
 PART NUMBER :0130-0496**

FOR FX-140



**FX-140 AMPD DOUBLE LENS
 SNOW SHIELD
 PART NUMBER :0130-0495**



**FX-140 AMPD ELECTRIC
 DOUBLE LENS SNOW SHIELD
 PART NUMBER :0130-0497**



**REPLACEMENT THREE PEICE
 ELECTRIC CORD SET FOR
 ALL RCA CONNECTION AFX
 ELECTRIC SHIELD HELMETS
 AND SHIELD KITS.
 PART NUMBER :0133-0518**



**12 VOLT POWER PLUG
 UNIVERSAL ADAPTER TO
 RCA CONNECTION
 PART NUMBER :2130-0053**

**NOTE:
 TO CONVERT EXISTING FX-90 , FX-100, FX-MAGNUS, OR FX-39DS HELMETS TO SNOW HELMETS:
 CHOOSE SHIELD TYPE AND BREATH GUARD.**

SNOW BREATH GUARD & CHIN CURTAIN

FOR FX-17, FX-17BH & FX-90



**HI-FLOW BREATH GUARD
PART NUMBER :0134-1060**

FOR FX-19



**HI-FLOW BREATH GUARD
PART NUMBER :0134-1495**

FOR FX-100 & FX-MAGNUS



**HI-FLOW BREATH GUARD
PART NUMBER :0134-1061**

FOR FX-21, FX-39DS & FX-41DS (XS-M)



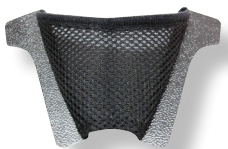
**EXTREME BREATH GUARD
PART NUMBER :0134-1362**

FOR FX-17, FX-17BH, FX17Y & FX-41DS (L-XXL)



**EXTREME BREATH GUARD
PART NUMBER :0134-1214**

**FOR FX-17, FX-17BH, FX17Y, FX-19, FX-19Y,
FX21 & FX-39DS**



**VENTED CHIN CURTAIN
PART NUMBER :0134-1363**

SAFETY & SIZE CHART

WHEN TO REPLACE A HELMET

The expected lifespan of any helmet is 4-5 years of seasonal use, and decreases accordingly as the frequency of use increases. As you would expect, helmets used for competition such as road racing and motocross tend to have a much shorter life span. The more exposure a helmet endures to the elements, body oils, and perspiration, the faster it will wear out. In most cases the helmet liner will be the first component to wear out and, as such, functions as a good indicator that a helmet should be replaced.

We at AFX recommend that any helmet suffering a significant impact to the shell be removed from use immediately, whether there is visible physical damage or not. A helmet is designed to deform in an accident in order to absorb the energy of the impact, and should never be reused afterwards for its ability to protect the rider further could be compromised.

HELMET FITTING GUIDE

1 | MEASURE YOUR HEAD

Determine the circumference of the widest part of your head by using a flexible tape measure. Generally, the widest part of a person's head is the area 2.5cm (1") above the eyes and ears. However, we suggest measuring at a few points both above and below that line to determine the greatest measurement before referring to our size tables. We also suggest testing the fit of a helmet one size smaller and one size larger than what the chart recommends. No helmet can provide protection if it's too uncomfortable to wear.

2 | TRY WEARING THE HELMET

Helmets must fit snugly, but not painfully tight. While holding the chinstraps outside of the helmet, pull it down over your head, taking care that the chinstraps do not go up inside the helmet. A proper-fitting helmet will feel snug with fairly even pressure around the sides and top of your head. On most modern helmets the liner is designed to be a little extra snug at first, but will break-in after several hours of riding to match the particular shape of your head.

If you are not familiar with how a helmet should fit and feel, be sure to ask for assistance from a salesperson or a more experienced rider. As a rule, the helmet should not be able to move around on your head without pulling on your skin. A loose fitting helmet is not only dangerous, but may also be noisy and tiring to wear. Most people make the mistake of buying a helmet that's too large. **IMPORTANT:** Make sure that you fasten the chinstrap securely beneath your chin when trying-on a helmet and then test to see that the helmet cannot be removed from your head when fastened in that manner.

3 | MAKE THE RIGHT DECISION

Most retail stores will not exchange purchased helmets if they've been worn for any length of time, so take your time, and wear the helmet inside the store for several minutes. Not every brand of helmet can fit every head size and shape. If you find that you just can't get a comfortably snug fit in our helmets we suggest you try a different brand. Helmets can't provide protection if they never get worn.

SAFETY REMINDER

No helmet can protect the wearer against all possible or foreseeable impacts. A helmet can only protect the portion of the head that is covered by the helmet. For maximum protection, the helmet must be well fitted with the chinstrap securely fastened. Failure to follow these instructions, the instructions printed on the helmet, and those contained in the owner's manual may result in the possibility of the helmet coming off during an accident - possibly resulting in a severe head injury or even death. While riding motorcycles, scooters, ATVs and snowmobiles is fun, it can also be a dangerous pastime. At AFX, we encourage you to enjoy riding responsibly, and to always ride within the limits of your abilities.

SIZE CHART **NOTE: THIS CHART IS FOR REFERENCE ONLY**

ADULT HELMET SIZES

XS 6 3/4 - 6 7/8 hat 21 1/4 - 21 5/8" 54 - 55 cm	S 7 - 7 1/8 hat 22 - 22 7/16" 56 - 57 cm	M 7 1/4 - 7 3/8 hat 22 13/16 - 23 1/4" 58 - 59 cm	L 7 1/2 - 7 5/8 hat 23 5/8 - 24" 60 - 61 cm
XL 7 3/4 - 7 7/8 hat 24 3/8 - 24 13/16" 62 - 63 cm	XXL 8 - 8 1/8 hat 25 3/16 - 25 5/8" 64 - 65 cm	3XL 8 1/4 - 8 3/8 hat 26 - 26 3/8" 66 - 67 cm	4XL 8 1/2 - 8 5/8 hat 26 3/4 - 27 1/8" 68 - 69 cm

YOUTH HELMET SIZES

YS 6 5/8 - 6 3/4 hat 20 7/8 - 21 1/4" 53 - 54 cm	YM 6 3/4 - 6 7/8 hat 21 1/4 - 21 5/8" 54 - 55 cm	YL 6 7/8 - 7 hat 21 5/8 - 22" 55 - 56 cm
--	--	--

AFXHELMETS.COM

AFXHELMETS.COM



AFX North America Inc.

TELEPHONE (TOLL-FREE) : 1-877-686-6477 FAX : (519) 686-6056

E - MAIL :SUPPORT@AFXHELMETS.COM

© Copyright 2014-2015, AFX North America Inc.

Helmet specifications subject to change without notice. Please consult our web site
(afxhelmets.com) for the most current product information.

PRINTED IN THE UNITED STATES OF AMERICA