

NFX
2018 VINTAGE



FX-76



HELMET TECHNOLOGY

- 1 SHELL DESIGN**
An aerodynamic shell design constructed using advanced fiberglass reinforced plastic (FRP) for light weight and strength
- 2 INTERIOR A**
A quilted helmet liner and cheek pads made with hypo-allergenic and anti-microbial nylon and perforated leather combination
- 3 CONE-HEAD EPS**
Advanced Cone-Head ® ultra light weight EPS protection system, allows helmets to be Engineered, lighter and fit closer to the head



A INTERIOR (LINER AND CHEEK PADS)



1



2



3



4



5



5

MAIN SPECIFICATIONS

- This helmet model meets or exceeds both ECE 22.05 and DOT FMVSS-218 motorcycle helmet safety standards
- 3 snap shield/visor compatible. shield/visor not included with helmet
- Retention system is a race approved Double D-RING
- Provides ample ear cavity space for most speaker systems
- A clear coat finish to protect paint & graphics
- A XS size FX-76 weighs 0.8 kg or 1.76 lbs, A XL size FX-76 weighs 1.0 kg or 2.2 lbs
- Available size: XS-XXL

Vintage 3-Snap Shields see page 106-107

Vintage 3-Snap Visors (Peaks) see page 111



FX-76

2018
new
GRAPHIC



MATTE BLACK / ORANGE

	XS	S	M	L	XL	XXL
0104-	2330	2331	2332	2333	2334	2335



GLOSS WHITE / GREY

	XS	S	M	L	XL	XXL
0104-	2336	2337	2338	2339	2340	2341



GLOSS BLUE / GREY

	XS	S	M	L	XL	XXL
0104-	2342	2343	2344	2345	2346	2347

FX-76



MATTE WHITE / GOLD / SILVER

	XS	S	M	L	XL	XXL
0104-	2318	2319	2320	2321	2322	2323



GLOSS ORANGE / BLUE / BEIGE

	XS	S	M	L	XL	XXL
0104-	2324	2325	2326	2327	2328	2329



FX-76



	FLAT RUST / GOLD					
	XS	S	M	L	XL	XXL
0104-	2072	2073	2074	2075	2076	2077



	FLAT BLACK / GOLD					
	XS	S	M	L	XL	XXL
0104-	2120	2121	2122	2123	2124	2125

FX-76



GLOSS MAGNETIC / SILVER

	XS	S	M	L	XL	XXL
0104-	2078	2079	2080	2081	2082	2083



GLOSS RUST / GOLD

	XS	S	M	L	XL	XXL
0104-	2126	2127	2128	2129	2130	2131

GLOSS DARK GREEN / GOLD

	XS	S	M	L	XL	XXL
0104-	2132	2133	2134	2135	2136	2137



GLOSS BLACK / GOLD

	XS	S	M	L	XL	XXL
0104-	2138	2139	2140	2141	2142	2143

FX-76



FLAT BLACK / ORANGE						
	XS	S	M	L	XL	XXL
0104-	2054	2055	2056	2057	2058	2059



FLAT WHITE / GREY						
	XS	S	M	L	XL	XXL
0104-	2060	2061	2062	2063	2064	2065



FLAT BLACK / GOLD						
	XS	S	M	L	XL	XXL
0104-	2108	2109	2110	2111	2112	2113

FX-76



GLOSS DENIM / BONE						
	XS	S	M	L	XL	XXL
0104-	2114	2115	2116	2117	2118	2119

TRICOLOR - MATTE

FX-76



FROST GREY / ORANGE / BLACK						
	XS	S	M	L	XL	XXL
0104-	2084	2085	2086	2087	2088	2089

FROST GREY / SILVER / BLACK						
	XS	S	M	L	XL	XXL
0104-	2090	2091	2092	2093	2094	2095

FX-76



FREEDOM / WHITE

	XS	S	M	L	XL	XXL
0104-	1630	1631	1632	1633	1634	1635



FREEDOM / BLACK

	XS	S	M	L	XL	XXL
0104-	1636	1637	1638	1639	1640	1641



FREEDOM / STEALTH

	XS	S	M	L	XL	XXL
0104-	1642	1643	1644	1645	1646	1647



REBEL / BLACK

	XS	S	M	L	XL	XXL
0104-	1648	1649	1650	1651	1652	1653



FX-76



	SHELBY®					
	XS	S	M	L	XL	XXL
0104-	1837	1838	1839	1840	1841	1842

The brand name, used herein remain the property of their respective owners. This listing of any brand names is not intended to imply any endorsement or direct affiliation by such brand names and AFX North America Inc.



	ROUTE 66 FLAT BLACK					
	XS	S	M	L	XL	XXL
0104-	1145	1146	1147	1148	1149	1150

	GLOSS MAGNETIC W/ NO CHROME TRIM					
	XS	S	M	L	XL	XXL
0104-	2096	2097	2098	2099	2100	2101



	GLOSS BLACK WITH CHROME TRIM					
	XS	S	M	L	XL	XXL
0104-	1129	1130	1131	1132	1133	1134

	FLAT BLACK W/ NO CHROME TRIM					
	XS	S	M	L	XL	XXL
0104-	1137	1138	1139	1140	1141	1142

	FUCHSIA WITH CHROME TRIM					
	XS	S	M	L	XL	
0104-	1198	1199	1200	1201	1202	



	FROST GREY W/ NO CHROME TRIM					
	XS	S	M	L	XL	XXL
0104-	1203	1204	1205	1206	1207	1208

	CANDY APPLE WITH CHROME TRIM					
	XS	S	M	L	XL	XXL
0104-	1622	1623	1624	1625	1626	1627

	WHITE WITH CHROME TRIM					
	XS	S	M	L	XL	XXL
0104-	1751	1752	1753	1754	1755	1756

VINTAGE SHIELD

AFX VINTAGE 3-SNAP FLIP SHIELD

SPECIFICATIONS & FEATURES

- UNIVERSAL 3-SNAP MOUNTING
- HARD COATED FOR DURABILITY
- OPTICALLY CORRECT UV TREATED



16cm (6 1/4")



HELMET IS NOT INCLUDED



CLEAR
PART NUMBER :0131-0075



DARK SMOKE
PART NUMBER :0131-0076



YELLOW SOLID
PART NUMBER :0131-0077



BLUE SOLID
PART NUMBER :0131-0078



SMOKE GRADIENT
PART NUMBER :0131-0079



SILVER MIRROR
PART NUMBER :0131-0080



GOLD MIRROR
PART NUMBER :0131-0081

AFX VINTAGE 3-SNAP FLIP SHIELD

SPECIFICATIONS & FEATURES

- UNIVERSAL 3-SNAP MOUNTING
- HARD COATED FOR DURABILITY
- OPTICALLY CORRECT UV TREATED



15cm (6")



HELMET IS NOT INCLUDED



SHORT SHIELD CLEAR
PART NUMBER :0131-0089



SHORT SHIELD DARK SMOKE
PART NUMBER :0131-0090



SHORT SHIELD SILVER MIRROR
PART NUMBER :0131-0091



VINTAGE SHIELD

AFX VINTAGE 3-SNAP FLIP SHIELD

SPECIFICATIONS & FEATURES

- UNIVERSAL 3-SNAP MOUNTING
- HARD COATED FOR DURABILITY
- OPTICALLY CORRECT UV TREATED



CLEAR SHIELD
PART NUMBER: 0131-0096



HELMET IS NOT INCLUDED



SMOKE SHIELD
PART NUMBER: 0131-0097



AFX VINTAGE 3-SNAP FLIP BUBBLE SHIELD

SPECIFICATIONS & FEATURES

- UNIVERSAL 3-SNAP MOUNTING
- HARD COATED FOR DURABILITY
- OPTICALLY CORRECT UV TREATED



CLEAR SHIELD
PART NUMBER: 0131-0094



HELMET IS NOT INCLUDED

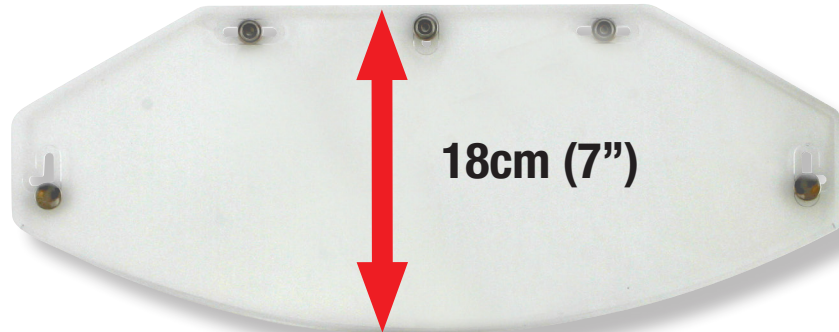


SMOKE SHIELD
PART NUMBER: 0131-0095

VINTAGE 5-SNAP FLAT SHIELD

SPECIFICATIONS & FEATURES

- UNIVERSAL 5-SNAP MOUNTING
- HARD COATED FOR DURABILITY
- OPTICALLY CORRECT UV TREATED



CLEAR
PART NUMBER :0131-0072



DARK SMOKE
PART NUMBER :0131-0073



YELLOW SOLID
PART NUMBER :0131-0074



AFX HELMET HOLDER

SPECIFICATIONS & FEATURES

- FITS ALL STANDARD SLAT-WALL TYPES
- PACKAGED 6PCS. PER BOX, PER ITEM NUMBER
- MADE FROM IMPACT RESISTANT PLASTIC ALLOY WITH SILVER AFX LOGO
- DESIGNED TO FIT ALL HELMET TYPES

AFX HELMET HOLDER
PART NUMBER :9903-0324

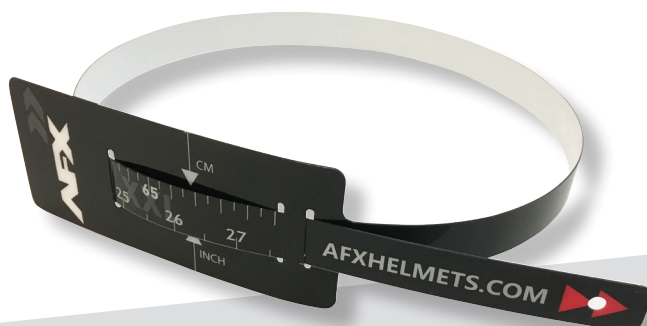


AFX WALL STICKER



AFX WALL STICKER
PART NUMBER :9904-1237
80cm (31.5") x 23cm (9")

AFX HEAD MEASUREMENT TOOL



AFX HEAD MEASUREMENT TOOL
PART NUMBER :9904-1238

VINTAGE SNAP ON VISORS (PEAKS)

3-SNAP SHORT WITH LIP



AMBER
PART NUMBER :0132-1018



GLOSS BLACK
PART NUMBER :0132-1015

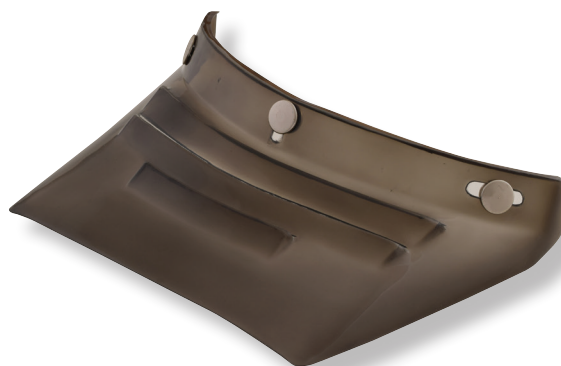


DARK SMOKE
PART NUMBER :0132-1016

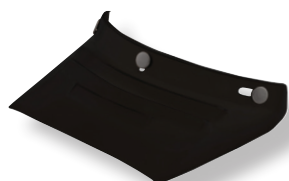


GLOSS WHITE
PART NUMBER :0132-1017

3-SNAP VINTAGE MX WITH 3 VENTS



DARK SMOKE
PART NUMBER :0132-1020



GLOSS BLACK
PART NUMBER :0132-1019



GLOSS WHITE
PART NUMBER :0132-1021



AMBER
PART NUMBER :0132-1022

VINTAGE SNAP ON VISORS (PEAKS)

3-SNAP VINTAGE MX WITH 4 VENTS



GLOSS BLACK
PART NUMBER :0132-1023



DARK SMOKE
PART NUMBER :0132-1024



GLOSS WHITE
PART NUMBER :0132-1025

3-SNAP VINTAGE MX WITH 6 VENTS



AMBER
PART NUMBER :0132-1029



GLOSS BLACK
PART NUMBER :0132-1026



DARK SMOKE
PART NUMBER :0132-1027

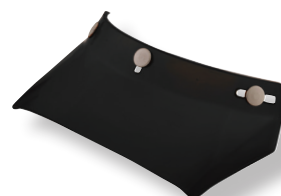


GLOSS WHITE
PART NUMBER :0132-1028

3-SNAP VINTAGE MX NON VENTED



DARK SMOKE
PART NUMBER :0132-1031



GLOSS BLACK
PART NUMBER :0132-1030



GLOSS WHITE
PART NUMBER :0132-1032



AMBER
PART NUMBER :0132-1033

AFX HELMET FIT AND SIZE GUIDE

HOW TO FIND THE RIGHT FITTING HELMET FOR YOUR HEAD SHAPE

To properly choose a helmet fit, there are three important points of criteria that need to be examined in order for you to choose the helmet that fits you best.

1. Head Shape

The shape of the riders head is more important than the measured size of the riders head. Head shape can be determined by many factors including genetics and ethnic origin. However its important to note that there is no universal perfect head shape that is used for all models of helmets. Some helmets are designed for a functionality that dictates the final shape and fit of the helmet in question.

AFX helmets can be grouped into these three main fit categories: slightly narrow fit, neutral fit, and slightly round fit.

- Slightly Narrow Fit, helmets in this head shape may feel a little tighter on the left and right sides of the riders head.
- Neutral Fit, helmets in this head shape tend to fit a majority of riders.
- Slightly Round Fit, helmets in this head shape may feel a little tighter on the front and back sides of the head for some riders.

Please refer to the AFX helmet fit shape explanation

2. Size Measurement

Determine the circumference of the widest part of your head by using a flexible tape measure. Generally, the widest part of a person's head is the area 2.5 cm (1") above the eyes and ears. However, we suggest measuring at a few points both above and below that line to determine the greatest measurement before referring to our size table. We also suggest testing the fit of a helmet one size smaller and one size larger than what the chart recommends. No helmet can provide protection if it's too uncomfortable to wear.

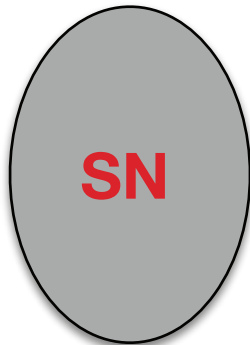
Please refer to the AFX helmet sizing chart

3. Comfort and Fit

Helmets must fit snugly, but not painfully tight. While holding the chinstraps outside of the helmet, pull it down over your head, taking care that the chinstraps do not go up inside the helmet. A proper-fitting helmet will feel snug with fairly even pressure around the sides and top of your head. On most modern helmets the liner and cheek pads are designed to be a little extra snug at first, but will break-in after several hours of riding to match the particular shape of your head. If you are not familiar with how a helmet should fit and feel, be sure to ask for assistance from a more experienced rider. As a rule, the helmet should not be able to move around on your head without pulling on your skin. A loose fitting helmet is not only dangerous, but may also be noisy and tiring to wear. Most people make the mistake of buying a helmet that's too large. **IMPORTANT:** Make sure that you fasten the chinstrap securely beneath your chin when trying-on a helmet and then test to see that the helmet cannot be removed from your head when fastened in that manner.

Note: Most AFX helmets offer some degree of comfort and fit customization by being able to interchange combinations of comfort liners and cheek pads within the helmet shell size range. For a more detailed explanation of this feature please refer to the owners manual included with your helmet or visit afxhelmets.com.

AFX HELMET HEAD FIT SHARP

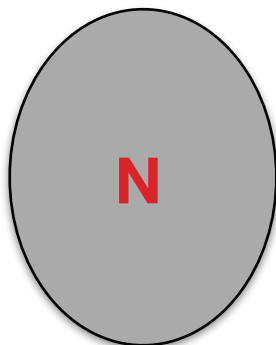


SLIGHTLY NARROW FIT

HELMETS IN THIS HEAD SHAPE
MAY FEEL A LITTLE TIGHTER ON
THE LEFT AND RIGHT SIDES OF
THE HEAD FOR SOME PEOPLE

SLIGHTLY NARROW FIT AFX HELMETS

FX-55, FX-105

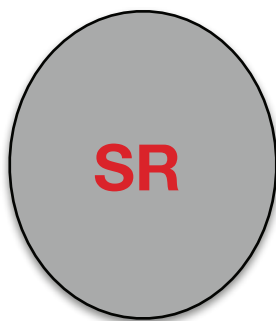


NEUTRAL FIT

HELMETS IN THIS HEAD SHAPE
WILL FIT A MAJORITY OF PEOPLE

NEUTRAL FIT AFX HELMETS

FX-17, FX-21, FX-39DS, FX-41DS,
FX-76, FX-90E, FX-95.



SLIGHTLY ROUND FIT

HELMETS IN THIS HEAD SHAPE
MAY FEEL A LITTLE TIGHTER ON
THE FRONT AND BACK SIDES OF
THE HEAD FOR SOME PEOPLE

SLIGHTLY ROUND FIT AFX HELMETS

FX-24, FX-33, FX-36, FX-46, FX-50

AFX HELMET SIZING FIT CHART

NOTE: THIS CHART IS FOR REFERENCE ONLY

Determine the circumference of the widest part of your head by using a flexible tape measure. Generally, the widest part of a person's head is the area 2.5 cm (1") above the eyes and ears. However, we suggest measuring at a few points both above and below that line to determine the greatest measurement before referring to our size table. We also suggest testing the fit of a helmet one size smaller and one size larger than what the chart recommends. No helmet can provide protection if it's too uncomfortable to wear.

Centimeters	Inches	Hat Size	Letter size	AFX size
48	19	6	Youth Small	Y-S
49	19 3/8	6 1/8	Youth Small	Y-S
50	19 3/4	6 1/4	Youth Medium	Y-M
51	20 1/8	6 3/8	Youth Medium	Y-M
52	20 1/2	6 1/2	Youth Large	Y-L
53*	20 7/8	6.625*	Youth Large*	Y-L*
53*	20 7/8	6.625*	Adult XS*	XS*
54	21 1/4	6 3/4	Adult XS	XS
55	21 5/8	6 7/8	Adult Small	S
56	22	7	Adult Small	S
57	22 3/8	7 1/8	Adult Medium	M
58	22 3/4	7 1/4	Adult Medium	M
59	23 1/8	7 3/8	Adult Large	L
60	23 1/2	7 1/2	Adult Large	L
61	24	7 5/8	Adult X-Large	XL
62	24 3/8	7 3/4	Adult X-Large	XL
63	24 3/4	7 7/8	Adult XX-Large	XXL
64	25 1/8	8	Adult XX-Large	XXL

Note: * Due to size fit similarities between Youth large and Adult X-Small Helmets in the sizes noted above, It is the Parents /Guardians responsibility to determine if a Youth Rider may safely and comfortably wear an Adult sized helmet.

SAFETY

WHEN TO REPLACE A HELMET

The expected lifespan of any helmet is 4-5 years of seasonal use, and decreases accordingly as the frequency of use increases. As you would expect, helmets used for competition such as road racing and motocross tend to have a much shorter life span. The more exposure a helmet endures to the elements, body oils, and perspiration, the faster it will wear out. In most cases the helmet liner will be the first component to wear out and, as such, functions as a good indicator that a helmet should be replaced.

We at AFX recommend that any helmet suffering a significant impact to the shell be removed from use immediately, whether there is visible physical damage or not. A helmet is designed to deform in an accident in order to absorb the energy of the impact, and should never be reused afterwards for its ability to protect the rider further could be compromised.

SAFETY REMINDER

No helmet can protect the wearer against all possible or foreseeable impacts. A helmet can only protect the portion of the head that is covered by the helmet. For maximum protection, the helmet must be well fitted with the chinstrap securely fastened. Failure to follow these instructions, the instructions printed on the helmet, and those contained in the owner's manual may result in the possibility of the helmet coming off during an accident - possibly resulting in a severe head injury or even death. While riding motorcycles, scooters, ATVs and snowmobiles is fun, it can also be a dangerous pastime. At AFX, we encourage you to enjoy riding responsibly, and to always ride within the limits of your abilities.



AFX North America Inc.

Distributed exclusively by:

**PARTS
EUROPE**

www.partseurope.eu

AFXHELMETS.COM



© Copyright 2017-2018, AFX North America Inc.
Helmet specifications subject to change without notice. Please
consult our web site (afxhelmets.com) for the most current
product information.
PRINTED IN GERMANY